



MOUNT LAWLEY SENIOR HIGH SCHOOL
An Independent Public School

2027 Course Information Handbook

Year 10

THE JOURNEY CONTINUES
GOOD TO GREAT



| | |
|---------------------------------------------------|-----------|
| INTRODUCTION | 3 |
| ▪ Welcome to Year 10 | 3 |
| ▪ Year 10 Course Changes – Languages and Pathways | 3 |
| ▪ Submitting Your Elective Course Preferences | 5 |
| COMPULSORY COURSES | 6 |
| ▪ English | 7 |
| ▪ Health and Physical Education | 9 |
| ▪ Humanities and Social Sciences | 10 |
| ▪ Mathematics | 11 |
| ▪ Science | 14 |
| ▪ Languages | 15 |
| ALTERNATIVE COURSES | 17 |
| ▪ Health and Physical Education | 18 |
| ▪ Science | 19 |
| ▪ Technologies | 19 |
| ▪ Humanities and Social Sciences | 20 |
| ELECTIVE COURSES | 21 |
| ▪ Arts | 22 |
| ▪ Health and Physical Education | 27 |
| ▪ Humanities and Social Sciences | 29 |
| ▪ Technologies | 32 |

Year 10 is a significant stage of secondary schooling, equipping students for their Year 11 and 12 pathway. Courses in Year 11 and 12 have prerequisite standards and each student's achievement in Year 10 will determine the courses they are recommended for in Year 11 and 12. It is time for Year 9 students to indicate their preferences for the elective courses they would like to undertake in Year 10.

COMPULSORY COURSES

All Year 10 students will study the following year long courses:

- English (4 periods per week)
- Health Education (1 period per week)
- Humanities and Social Sciences (4 periods per week)
- Mathematics (4 periods per week)
- Physical Education (2 periods per week)
- Science (4 periods per week)
- Languages - GAT Students (4 periods per week)

Year 10 students will be placed in the Mathematics, English, Science and HASS course that will best cater for their academic needs. Each student's Semester 1 placement is determined by their academic achievement and progress in Terms 1-3 of Year 9. Each student's Semester 2 placement is determined by their academic achievement and progress in Semester 1 of Year 10.

Year 10 students are encouraged to study the Language they have studied in Years 7-9 through to the end of Year 10 (Italian, French, Chinese, Japanese or Korean) unless they are eligible for, and are currently enrolled in, Literacy Support. Year 10 Gifted and Talented Languages students will have a Period 0 class (7.35am – 8.35 am) twice per week to facilitate their specialist Language program.

YEAR 10 COURSE CHANGES – LANGUAGES AND PATHWAYS

Information for Parents and Carers

As part of Mount Lawley Senior High School's ongoing curriculum planning and pathways review, we have made some adjustments to Year 10 courses, with a particular focus on language studies. These changes are designed to strengthen continuity of learning, support informed pathway decisions, and better prepare students for senior secondary schooling and post-school options.

Language study in Year 10 plays an important role in developing literacy, communication and higher-order thinking skills, and in preparing students for the expectations of senior schooling. The changes also reflect the requirements of specific pathway programs, including Gifted and Talented education, and align with Department of Education guidance around continuity and pathway readiness.

What this means for students

- **Gifted and Talented (GAT) students:** Students enrolled in the Gifted and Talented program are required to continue their language course in Year 10. This supports the academic expectations of the GAT pathway and ensures students maintain appropriate challenge and progression. GAT students are not able to select an alternate course in place of a language.
- **Students in Literacy Support:** Students receiving Literacy Support will continue in this program, as it forms part of their identified learning needs and support plan, and are not able to select an alternate course in place of a language.
- **Students not continuing with languages:** Students who are not enrolled in the GAT program or in Literacy support and choose not to continue with a language in Year 10 will be required to select a subject from the alternate course list. In this situation, a standard elective may not be chosen in place of a language.

Looking ahead: Senior school and university pathways

Continuing a language into senior school offers clear academic and career advantages.

Year 10 languages are essential preparation for students considering an ATAR language in Years 11 and 12 or studying a language at university, where prior learning can lead to advanced placement. Students who complete an ATAR language also receive the 10% LOTE bonus, which contributes positively to their ATAR.

Languages can be studied alongside degrees such as business, law, engineering, and health sciences, and open access to exchange programs, internships, and study abroad opportunities. In a globalised workforce, language skills are highly valued, giving students a clear edge across many career pathways, even in local roles. Finally, students who continue their language studies at Mount Lawley may also participate in overseas tours and exchange programs during their time at high school.

ALTERNATIVE COURSES

Students enrolled in the Gifted and Talented (GAT) program are required to continue their language course in Year 10. This requirement supports the academic expectations of the GAT pathway and ensures students maintain appropriate academic challenge and progression. Students enrolled in the GAT program are not eligible to select an alternate course in place of a language.

Students who are in Literacy Support will continue in this program, as it forms part of their identified learning needs and support plan and do not choose an alternate elective course.

Students who are not enrolled in the GAT program or Literacy Support and who elect not to continue with language studies in Year 10 will be required to select a subject from the alternate course list. In this situation, a standard elective may not be selected in place of a language course.

| | | |
|------------------------------------------------|-----------------------------------------------------------------|----------------------------------------|
| HEALTH & PHYSICAL EDUCATION | Strength and Conditioning | |
| SCIENCE | Forensic Science | |
| TECHNOLOGIES | Computer Aided Drawing & Computer Aided Manufacturing (CAD/CAM) | Wellness, Lifestyle and Healthy Living |
| HUMANITIES & SOCIAL SCIENCES (HASS) | Ancient Worlds: Power, Myth and Mystery | Unlocking Philosophy and Ethics |

ELECTIVE COURSES

Year 9 students are invited to indicate their preferences for the four elective courses they would like to study in Year 10. Elective courses are two periods per week for one semester in duration. Elective courses are on offer in the Arts, Technologies, HASS and Physical Education learning areas. At least one elective course must be studied from Technologies and The Arts

| | | | | |
|------------------------------------------------|-------------------------|-----------------------------|-----------------------------|------------------------|
| TECHNOLOGIES | Design and Technologies | Digital Technologies | | |
| HEALTH & PHYSICAL EDUCATION | Outdoor Education | Advanced Physical Education | High Performance Volleyball | Health in Action |
| ARTS | Drama | Music | Media | Visual Arts |
| HUMANITIES & SOCIAL SCIENCES (HASS) | Criminal Minds | Aboriginal Studies | Psychology | Accounting and Finance |

SUBMITTING YOUR ELECTIVE COURSE PREFERENCES FOR YEAR 10 IN 2027

Parents/Carers and students should undertake the online process together.

1. Read the descriptions in this booklet for each elective course on offer.
2. Follow the instructions in How to submit your elective course preferences for Year 10 in 2027 published on the Mount Lawley Senior High School website
<https://www.lawley.wa.edu.au/view/information/course-handbooks>

- In Subject Selection Online reset your password and login using your student email address
- Select your elective course preferences from the drop down menus
- Enter your 'Parent Pin' to have your Parent/Carer authorise your choices.
- Print and have both student and parent sign a copy of your Elective Course Selection Report
- Hand in your signed Elective Course Selection Report to your Form Teacher

If you have any difficulties with this process, contact the Upper School office on 9265 1543 or email mountlawley.shs.upperschooladmin@education.wa.edu.au

Every effort will be made to place students into their most preferred courses. The timetable is created based on student demand for courses. Due to the complexities in the construction of the timetable it may be necessary for some students to be enrolled in courses that are ranked lower in their preferences so please indicate your ranked preferences and reserves with careful consideration. Once the grid is created, there is limited ability for students to move classes due to change of mind.

COURSE CHANGE REQUESTS

Course changes outside of the elective course preference process are not guaranteed.

Course Change Request Forms are available in hard copy from the Upper School office or online at <https://www.lawley.wa.edu.au/view/upper/upper-school> and can be submitted back to the Upper School office once signed by a parent. Course change requests need to be received by the Upper School office by the end of the term (Week 9) before the course starts.

Course change requests received during school holiday periods or once a course has begun are rarely able to be accommodated.



COMPULSORY COURSES

ENGLISH

All Year 10 students will study an English course for four lessons per week for the year.

The Year 10 English courses are composed of a variety of tasks, most of which focus on five common areas. These areas are prose, drama, poetry, media and expository writing. Students will gain a general grounding in the key skills of reading, viewing, writing, speaking and listening.

There are three English courses. The English, English Academic Enrichment (AE) and English as an Additional Language or Dialect (EAL/D) courses prepare students for the various pathways available to them in Year 11. In Semester 1, students are placed in the English course that will best extend their academic needs, as evidenced by their progress and achievement in Terms 1-3 of Year 9 English.

At the end of Semester 1 in Year 10, a student's overall grade for English, their exam marks and teacher recommendation will determine which courses they are recommended for in Year 11. Their recommendations are reviewed again at the end of Year 10.

ENGLISH

The top ranked students placed in the Year 10 English course will be grouped together in Advanced classes. Students will study one of a number of sub-genres of novels and short stories. They will also examine biography, documentary and feature films. Students will examine narrative techniques in novels and short stories and historical and contemporary perspectives in poetry with emphasis on language and form. The course also examines how the various media work as language systems and how they are linked to cultural experience. Students will analyse and write about feature films and will study how texts change in content and approach when transferred from one medium to another. Students will be exposed to a variety of creative writing strategies.

ENGLISH PATHWAYS

| GRADE ACHIEVED IN YEAR 10 ENGLISH AND ENGLISH ADVANCED | YEAR 11 | YEAR 12 |
|--------------------------------------------------------------|---------------------------------------------------------------------------------------------|-------------------------------------------------------------------------------------|
| A WITH TEACHER RECOMMENDATION | English ATAR Unit 1 & 2 Literature ATAR Unit 1 & 2 | English ATAR Unit 3 & 4 Literature ATAR Unit 3 & 4 |
| B OR C WITH TEACHER RECOMMENDATION | English General English Unit 1 & 2 English ATAR Unit 1 & 2 Literature ATAR Unit 1 & 2 | English General Unit 3 & 4 English ATAR Unit 3 & 4 Literature ATAR Unit 3 & 4 |
| C OR D | English General Unit 1 & 2 English ATAR Unit 1 & 2 | English General Unit 3 & 4 English ATAR Unit 3 & 4 |

ENGLISH: ACADEMIC ENRICHMENT (AE)

Students consistently performing well above the Achievement Standard in Terms 1-3 of Year 9 will be placed in the English Academic Enrichment course. Representations of life and cultures are examined in this course along with traditional prose, poetry and drama. Students will study a number of genres of fiction. Students will examine narrative techniques in prose and drama as well as contemporary and historical perspectives in poetry with emphasis on poetic techniques and form. The course also examines how literary works change in content and approach when transferred from one medium to another. Students will be exposed to a variety of creative writing strategies.

YEAR 10

ENGLISH ACADEMIC ENRICHMENT PATHWAYS

| GRADE ACHIEVED IN YEAR 10 ENGLISH AE | YEAR 11 | YEAR 12 |
|-------------------------------------------|---------------------------------------------------------------------------------------------|-------------------------------------------------------------------------------------|
| A OR B WITH TEACHER RECOMMENDATION | English ATAR Unit 1 & 2 Literature ATAR Unit 1 & 2 | English ATAR Unit 3 & 4 Literature ATAR Unit 3 & 4 |
| B OR C WITH TEACHER RECOMMENDATION | English General English Unit 1 & 2 English ATAR Unit 1 & 2 Literature ATAR Unit 1 & 2 | English General Unit 3 & 4 English ATAR Unit 3 & 4 Literature ATAR Unit 3 & 4 |

ENGLISH AS AN ADDITIONAL LANGUAGE OR DIALECT (EAL/D)

This course of study in English is only available to students who are resident in Australia for less than seven years in their final year of secondary school (Year 12). Eligibility includes having received an education in the student's home culture in which the main language of instruction was not English.

EAL/D differs from English or English Literature in that the practical modes of Speaking and Listening carry the same proportion of marks as Reading and Viewing and Writing in the development of Standard Australian English. Students will learn how to become competent, reflective, adaptable and critical cross-cultural users of language.

EAL/D PATHWAYS

| ACADEMIC ACHIEVEMENT IN YEAR 10 | YEAR 11 | YEAR 12 |
|------------------------------------------------------------------------------------------------------------|---------------------------------------------------------------------------|--------------------------------------------------------------------------|
| A OR B, OR PROGRESS MAP LEVELS OF 4 AND ABOVE, OR IELTS LEVEL 6, OR PRIVATE LANGUAGE COLLEGE REPORT | EAL/D ATAR Units 1 & 2 | EAL/D ATAR Units 3 & 4 |
| C OR D | EAL/D General Units 1 & 2 Teacher recommendation needed for EAL/D ATAR | EAL/D General Units 3 & 4 Teacher recommendation needed EAL/D ATAR |

For further information contact:

Rebecca Davis
Program Coordinator - English
rebecca.davis@education.wa.edu.au

HEALTH & PHYSICAL EDUCATION

HEALTH EDUCATION

All Year 10 students will study Health Education for one lesson per week for the year.

PERSONAL, SOCIAL AND COMMUNITY HEALTH

This unit encourages individuals to take responsibility for their own health and wellbeing in an engaging and diverse curriculum. Student's complete SDERA's Keys for Life program, which encourages responsible decision making and information regarding risks and responsibilities of attaining a driver's licence culminating in completion of the Learners test at school. Students are also exposed to the RELATE program which is designed to increase awareness of, and respect for, diversity, understand gender expectations and social norms on relationships and sexual health.

The unit also looks into ethical behaviour in relationships whilst also being able to identify and address disrespectful behaviour. Students are exposed to Holistic health, looking into the social, economic and environmental factors that influence health in different countries and communities. Finally, students will complete specific first aid courses to expose them to scenarios they may face in the real world.

HEALTH PATHWAYS

| YEAR 10 | YEAR 11 | YEAR 12 |
|-------------------------|-----------------------------------------------|---------|
| Health Education | Health Studies General Health Studies ATAR | |

PHYSICAL EDUCATION

All students will participate in General Physical Education for two lessons per week for the year.

GENERAL PHYSICAL EDUCATION

General Physical Education covers covering invasion, net/wall and striking games as well as fitness and athletics. The aim of the sessions is to develop healthy, active members of the community through the development of physical ability as well as leadership, organisation and team work skills. The Health and Physical Education team at Mount Lawley Senior High School aims to provide a variety of learning experiences that develop healthy, active, positive contributors to the Mount Lawley community. Our programs are designed with a holistic vision where all students are given the opportunity to develop physical skills and abilities along with resilience, teamwork and leadership within all learning area contexts.

PHYSICAL EDUCATION PATHWAYS

| YEAR 10 | YEAR 11 | YEAR 12 |
|---------------------------|-----------------------------------------------------------------------------------------------------|---------|
| Physical Education | Certificate II in Sport Coaching (VET) Physical Education (General) Physical Education (ATAR) | |

For further information contact:

Adam Zen

Program Coordinator - Health & Physical Education

adam.zen@education.wa.edu.au

YEAR 10

Course Information Handbook 2027

HUMANITIES AND SOCIAL SCIENCES (HASS)

All Year 10 students will study Humanities and Social Sciences (HASS) for four lessons per week for the year.

All Year 10 students undertake a common course that reflects the requirements of the Western Australian Curriculum. Through the Year 10 HASS course, students explore History, Geography, Economics and Civics and Citizenship. The course challenges and extends students through significant inquiry-based work. Students are provided with regular opportunities to develop skills in research and exam techniques.

In Semester 1, students are allocated to the Year 10 HASS class that will best cater for their academic needs, as evidenced by their progress and achievement in Terms 1-3 of Year 9 HASS. All classes follow the same program. Students consistently performing well above the Achievement Standard in Terms 1-3 of Year 9 will be placed together in Academic Enrichment or Advanced classes. Students in the Academic Enrichment and Advanced streams will be extended through the pace of the course and participation in State and National competitions. In Semester 2, class placements are reviewed and students are allocated to the Year 10 HASS class that will best cater for their academic needs, as evidence by their progress and achievement in Semester 1 of Year 10.

HASS PATHWAYS

| GRADE ACHIEVED IN YEAR 10 HASS | YEAR 11 | YEAR 12 |
|-----------------------------------------------------------------|---------------------------------------------------------------------------------------------------------------------------------------------------------------------------|---------|
| A OR B (STUDENTS WITH A STRONG C MAY APPLY FOR ATAR) | Economics ATAR Geography ATAR History – Ancient ATAR History – Modern ATAR Politics and Law ATAR Psychology ATAR | |
| C | Geography General History – Ancient General History – Modern General Psychology General Careers & Employability General Certificate II in Workplace Skills | |

For further information contact:

Kieren Pearce
 Program Coordinator - Humanities and Social Sciences (HASS)
kieren.pearce@education.wa.edu.au

MATHEMATICS

All Year 10 students will study a Mathematics course for four lessons per week. To ensure every student is supported, adequately challenged, and set up for success in their senior secondary pathways, students are placed into a course that aligns with their current mathematical foundation and learning pace.

Placements are carefully determined by the Mathematics Department based on a combination of:

- **Year 9 Achievement:** Academic performance across Terms 1–3.
- **Cohort Ranking:** The student's demonstrated mathematical ability relative to the curriculum standards.
- **Teacher Recommendation:** Based on demonstrated work ethic, which includes consistent task completion, independent study skills, and resilience when tackling complex problems

MATHEMATICS ESSENTIAL

This course is designed for students who benefit from extra support and a highly scaffolded learning environment. The focus is on consolidating fundamental mathematical concepts within the Western Australian Curriculum, building essential numeracy skills, and developing the students' confidence in applying mathematics to practical, everyday situations.

MATHEMATICS STANDARD

This course covers the core Western Australian Curriculum and provides a balanced pace of learning. Students will receive structured support to master key algebraic, geometric, and statistical concepts. This course is designed to build a solid mathematical foundation, ensuring students have the thorough understanding required before progressing to senior secondary mathematics.

MATHEMATICS ADVANCED

This is a rigorous course designed for students who have demonstrated high achievement and a strong, independent work ethic in Year 9. The curriculum moves at a significantly faster pace and explores abstract concepts in greater depth. Students in this course are expected to possess strong problem-solving skills and the ability to grasp complex mathematical ideas quickly with less direct scaffolding.

MATHEMATICS ACADEMIC ENRICHMENT

This course is by invitation and caters to highly capable students. It covers the Western Australian Curriculum at an accelerated pace, while delving into advanced extension topics beyond the standard syllabus. It requires an exceptional level of independent study, logical reasoning, and a genuine passion for mathematical inquiry.

MATHEMATICS PATHWAYS

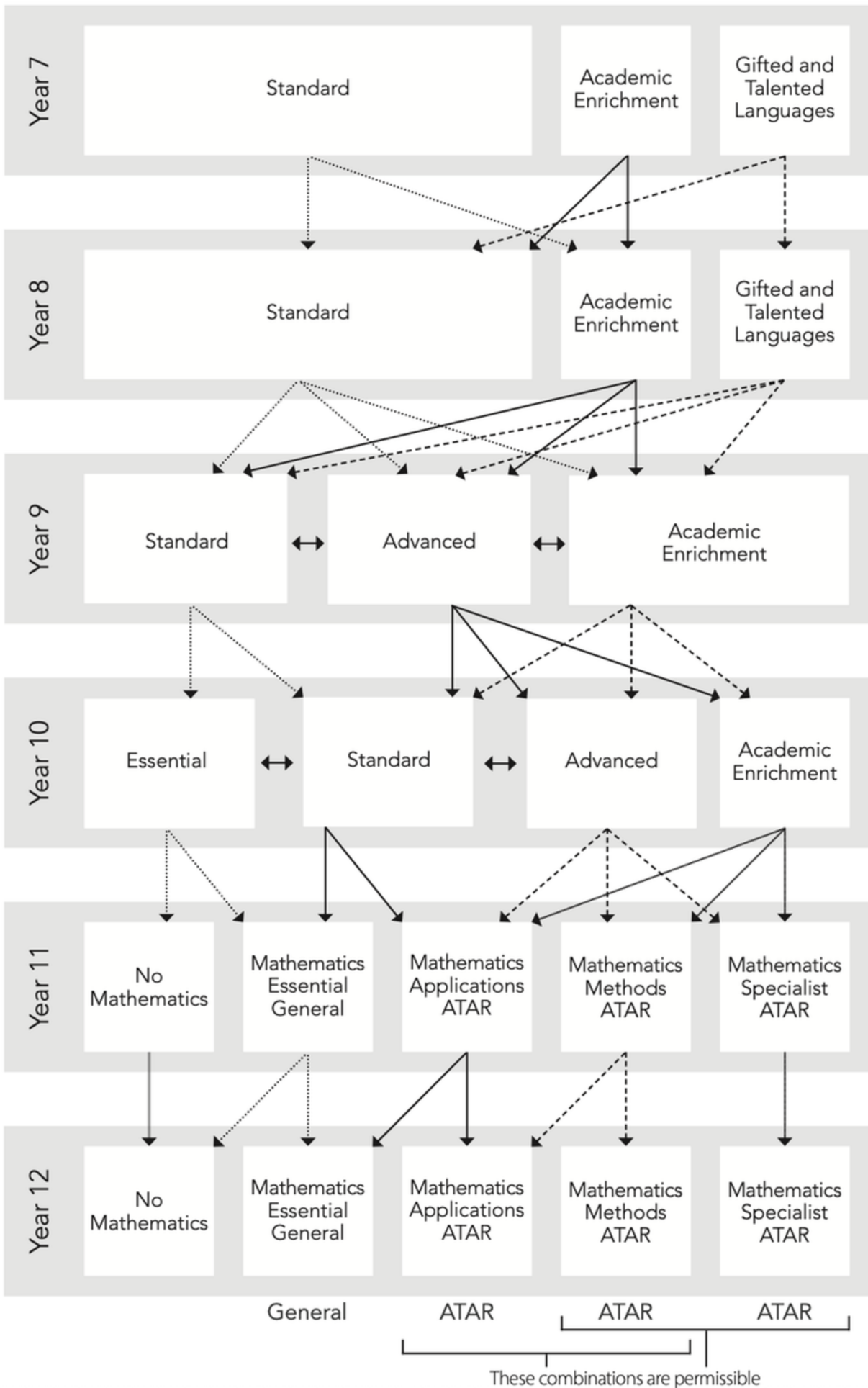
The table below shows the possible Year 11 and 12 courses each Year 10 course may lead to:

| YEAR 10 | YEAR 11 | YEAR 12 |
|----------------------------------------|--------------------------------------------------------------------------------------------------------------------------------------------------------------------------------------------------------------------------------------------------------|--------------------------------------------------------------------------------------------------------------------------------------------------------------------------------------------------------------------------------------------------------|
| Mathematics Essential | Mathematics Essential Unit 1 & 2 General | Mathematics Essential Unit 3 & 4 General |
| Mathematics Standard | Mathematics Essential Unit 1 & 2 General OR Mathematics Applications Unit 1 & 2 ATAR | Mathematics Essential Unit 3 & 4 General OR Mathematics Applications Unit 3 & 4 ATAR |
| Mathematics Advanced | Double Maths Mathematics Specialist Unit 1 & 2 ATAR Mathematics Methods Unit 1 & 2 ATAR OR Single Courses Mathematics Methods Unit 1 & 2 ATAR OR Mathematics Applications Unit 1 & 2 ATAR | Double Maths Mathematics Specialist Unit 3 & 4 ATAR Mathematics Methods Unit 3 & 4 ATAR OR Single Courses Mathematics Methods Unit 3 & 4 ATAR OR Mathematics Applications Unit 3 & 4 ATAR |
| Mathematics Academic Enrichment | Double Maths Mathematics Specialist Unit 1 & 2 ATAR Mathematics Methods Unit 1 & 2 ATAR OR Single Courses Mathematics Methods Unit 1 & 2 ATAR OR Mathematics Applications Unit 1 & 2 ATAR | Double Maths Mathematics Specialist Unit 3 & 4 ATAR Mathematics Methods Unit 3 & 4 ATAR OR Single Courses Mathematics Methods Unit 3 & 4 ATAR OR Mathematics Applications Unit 3 & 4 ATAR |

All ATAR courses have exit examinations at the end of Year 12. Mathematics Essential has an Externally Set Task to complete in Term 2.

For further information contact:

Eric Tang
Program Coordinator - Mathematics
eric.tang@education.wa.edu.au



YEAR 10

SCIENCE

All students study a science course for four lessons per week for the year.

Students will be placed into the Science course that best caters for their academic needs based on their Year 9 performance. These placements are based on their Year 9 achievement in Terms 1-3 according to the cohort rank. Students consistently performing well above the Judging Standards will be placed together in either an Academic Enrichment or Advanced class. Other students will be placed into a Standard class.

Throughout the year, students in the Academic Enrichment and Advanced classes will study a course that enables the students to be best placed for an ATAR science pathway in Year 11. Students in the Standard pathway will study a course that enables the students to select General science courses in Year 11. In semester two class placements and pathways are reviewed by the Program Coordinator, based upon progress and achievement in semester one and subject selection choices. Students may be allocated an alternate pathway at this point, based on the above criteria.

In the science curriculum, students investigate processes that underpin heredity and natural selection to understand the continuity of life. They develop a more sophisticated understanding of atomic theory and explore patterns and relationships within the periodic table to explain ionic and covalent bonding. They predict the effect of changing reactant and reaction conditions and use chemical equations to predict reaction products. They explore the key events in the formation of stars, galaxies and solar systems and how space exploration has contributed to knowledge of the formation and evolution of the universe and improved life on Earth. They understand that motion and forces are related by applying physical laws and mathematical models. They apply the law of conservation of energy to analyse system efficiency.

ACADEMIC ENRICHMENT/ADVANCED SCIENCE PATHWAY

| PATHWAY GRADE | YEAR 11 | YEAR 12 |
|---------------|----------------------------------------------------------------------|---------|
| A OR B | Biology ATAR Chemistry ATAR Human Biology ATAR Physics ATAR | |

STANDARD PATHWAY

| PATHWAY GRADE | YEAR 11 | YEAR 12 |
|---------------|----------------------------------------------------------------------|---------|
| A | Biology ATAR Chemistry ATAR Human Biology ATAR Physics ATAR | |

Students will also need the related Mathematics ATAR recommendation for Year 11 ATAR Science courses.

For further information contact:

Mat Winter
Program Coordinator - Science
 mat.winter@education.wa.edu.au

YEAR 10

LANGUAGES

Year 10 students who study a language will have two lessons per week for the year. All Year 10 Gifted and Talented (GAT) Language students study a language for four lessons per week for the year. The Year 10 Language courses reinforce the learning concepts and content covered in Years 7, 8 and 9. Whilst developing and extending their repertoire of vocabulary and grammatical structures, students use their language skills to communicate in both the written and spoken forms.

CHINESE

In Year 10, students consolidate and progress the skills, knowledge and understanding of prior learning and experiences. They use the Chinese language to engage in more sustained interactions, exchanging information about 'future plans and travel', and when collaborating in activities involving planning and negotiating. Students use their literacy knowledge to engage with, and convey information from, increasingly more complex Chinese texts. They draw on familiar and modelled language and an increasing range of linguistic resources to create and present more detailed informative, imaginative and personal texts for specific purposes.

Students continue to develop their understanding of the systems of the Chinese language, recognising and using linguistic resources to communicate in Chinese with increasing fluency and independence.

FRENCH

In Year 10, students consolidate and progress the skills, knowledge and understanding of prior learning and experiences. They use the French language to engage in more sustained interactions, exchanging information about 'future plans and travel', and when collaborating in activities involving planning and negotiating. Students use their literacy knowledge to engage with, and convey information from, increasingly more complex French texts. They draw on familiar and modelled language and an increasing range of linguistic resources to create and present more detailed informative, imaginative and personal texts for specific purposes.

Students continue to develop their understanding of the systems of the French language, recognising and using linguistic resources to communicate in French with increasing fluency and independence.

ITALIAN

In Year 10, students consolidate and progress the skills, knowledge and understanding of prior learning and experiences. They use the Italian language to engage in more sustained interactions, exchanging information about 'future plans and travel', and when collaborating in activities involving planning and negotiating. Students use their literacy knowledge to engage with, and convey information from, increasingly more complex Italian texts. They draw on familiar and modelled language and an increasing range of linguistic resources to create and present more detailed informative, imaginative and personal texts for specific purposes.

Students continue to develop their understanding of the systems of the Italian language, recognising and using linguistic resources to communicate in Italian with increasing fluency and independence.

KOREAN

In Year 10, students consolidate and progress the skills, knowledge and understanding of prior learning and experiences. They use the Korean language to engage in more sustained interactions, exchanging information about 'future plans and travel', and when collaborating in activities involving planning and negotiating. Students use their literacy knowledge to engage with, and convey information from, increasingly more complex Korean texts. They draw on familiar and modelled language and an increasing range of linguistic resources to create and present more detailed informative, imaginative and personal texts for specific purposes.

Students continue to develop their understanding of the systems of the Korean language, recognising and using linguistic resources to communicate in Korean with increasing fluency and independence.

YEAR 10

JAPANESE

In Year 10, students consolidate and progress the skills, knowledge and understanding of prior learning and experiences. They use the Japanese language to engage in more sustained interactions, exchanging information about 'future plans and travel', and when collaborating in activities involving planning and negotiating. Students use their literacy knowledge to engage with, and convey information from, increasingly more complex Japanese texts. They draw on familiar and modelled language and an increasing range of linguistic resources to create and present more detailed, informative, imaginative and personal texts for specific purposes.

Students continue to develop their understanding of the systems of the Japanese language, recognising and using linguistic resources to communicate in Japanese with increasing fluency and independence.

LANGUAGE PATHWAYS

Students in all languages especially GAT Languages are strongly encouraged to continue with the language at ATAR level.

| GRADE ACHIEVED IN YEAR 10 LANGUAGE | YEAR 11 | YEAR 12 |
|------------------------------------|---------------------------------------------------------------|---------|
| A OR B IN CHINESE | Chinese: Second Language ATAR Chinese: First Language ATAR | |
| A OR B IN FRENCH | French: Second Language ATAR | |
| A OR B IN ITALIAN | Italian: Second Language ATAR | |
| A OR B IN JAPANESE | Japanese: Second Language ATAR | |
| A OR B OR C IN KOREAN | Korean: Second Language ATAR | |

**The offering of all courses is subject to student numbers*

SECOND LANGUAGE COURSES

WACE Second Language courses are aimed at Year 11-12 students for whom the language is a second (or subsequent) language. These students have not been exposed to or interacted in the language outside the language classroom. They have typically learnt everything they know about the language and its culture through classroom teaching in an Australian school or similar environment, where English is the language of school instruction. Students have typically studied the language for 200-400 hours at the commencement of Year 11. These students may have experienced some short stays or exchanges (less than two years in total) in a country where the language is a medium of communication.

FIRST LANGUAGE COURSES

WACE First Language courses are for Year 11-12 students who have an extended cultural and linguistic background in the language. These students may have been born or have lived in a country where the language is spoken or have had more than five years formal education (from pre-primary or equivalent) in the language in a country and/or school where the language is the medium of communication and/or instruction. They speak or write the language at home or elsewhere outside the classroom, in a sustained manner with a person or persons who have a background in the language.

For further information contact:

Louise Chapman
Program Coordinator - Languages
louise.chapman@education.wa.edu.au



ALTERNATIVE COURSES

ALTERNATIVE COURSES

HEALTH & PHYSICAL EDUCATION

| | | | |
|----------------------------------|--------|-----------------|------|
| Strength and Conditioning | 10PESC | Semester Course | \$40 |
|----------------------------------|--------|-----------------|------|

SCIENCE

| | | | |
|-------------------------|-------|-----------------|------|
| Forensic Science | 10FOR | Semester Course | \$32 |
|-------------------------|-------|-----------------|------|

TECHNOLOGIES

| | | | |
|----------------------------------------------------------------------------|-------|-----------------|-------|
| Computer Aided Drawing & Computer Aided Manufacturing (CAD/CAM) | 10CAD | Semester Course | \$40 |
| Wellness, Lifestyle and Healthy Living | 10WLH | Semester Course | \$120 |

HUMANITIES AND SOCIAL SCIENCES

| | | | |
|------------------------------------------------|-------|-----------------|------|
| Ancient Worlds: Power, Myth and Mystery | 10AW | Semester Course | \$20 |
| Unlocking Philosophy and Ethics | 10PHL | Semester Course | \$20 |

HEALTH & PHYSICAL EDUCATION

STRENGTH AND CONDITIONING (10PESC)

This unit focuses on developing students' overall fitness through training in a commercial gym facility, group fitness sessions and outdoor environments. Students will build their cardiorespiratory endurance, muscular strength and endurance, flexibility, and functional mobility through a variety of structured workouts and training methods. They will learn correct technique, safe training practices and how to design and apply effective fitness routines to improve performance and wellbeing. This course is ideal for students looking to enhance their fitness, build confidence in gym-based training and develop lifelong healthy habits. Students will also be given the opportunity to build their own programs and deliver conditioning circuits with their peers.

SCIENCE

FORENSIC SCIENCE (10FOR)

Have you ever wondered how crimes are solved using science? In this exciting and hands-on elective, you will explore the real techniques forensic scientists use to investigate crime scenes and analyse evidence.

Throughout the course, you will examine blood spatter patterns, fingerprints, trace evidence, impressions, handwriting analysis, chromatography, forensic chemistry, and DNA testing. You will learn how evidence is collected, tested and interpreted to reconstruct events and identify suspects. Practical investigations and simulated crime scenes will allow you to apply scientific thinking and problem-solving skills in realistic scenarios.

This course combines biology, chemistry and physics in an applied, investigative context. You will develop skills in observation, data analysis, critical thinking and scientific communication while working both independently and in teams.

Forensic Science is ideal for students who enjoy practical activities, solving problems and thinking logically. If you enjoy shows like crime investigations and want to see how science works in real life, beyond the textbook, this elective is for you.

TECHNOLOGIES

COMPUTER AIDED DRAWING & COMPUTER AIDED MANUFACTURING (CAD/CAM) (10CAD)

This course gives students a practical introduction to the digital design and manufacturing technologies widely used in modern industry. It is ideal for students interested in engineering, design, construction, or technology-based careers.

Students will learn to use industry-standard Computer Aided Design (CAD) software, including AutoCAD and Fusion 360, to create precise technical drawings and 3D models. They will follow the Technologies design process to interpret design briefs, generate ideas, and develop detailed designs ready for production. A key feature of the course is hands-on manufacturing. Students will use computer-controlled equipment such as laser cutters, CNC machines, plasma cutters, and 3D printers to produce real-world projects based on their designs.

WELLNESS, LIFESTYLE AND HEALTHY LIVING (10WLH)

The proposed Year 10 Wellness, Food and Healthy Living course will provide students with opportunities to explore the relationship between nutrition, lifestyle choices and personal wellbeing through both theoretical learning and practical experiences.

The course aims to enable students to: understand the connection between food, lifestyle and wellbeing develop skills in planning and preparing nutritious meals and snacks, explore strategies that support mental health and stress management, analyse the influence of media and marketing on health and wellness trends, develop personal strategies for maintaining a balanced and healthy lifestyle.

HUMANITIES AND SOCIAL SCIENCES (HASS)

ANCIENT WORLDS: POWER, MYTH AND MYSTERY (10AW)

Are you interested in gods and goddesses, warrior kings and queens and lost civilisations? This course examines the forces that shaped the ancient world, from powerful rulers and empires to warfare, religion and daily life. Students will explore questions about how rulers maintained control, why societies engaged in extreme practices, and what life was like for different groups within each civilisation. This course is designed to spark interest in the ancient world by exploring how past societies understood life, death, power and belief. Students will investigate a range of civilisations including Ancient Egypt, Greece, Rome, the Aztecs and the Vikings, as well as enduring mysteries such as the Minoans and the legend of Atlantis.

This is not a traditional history course. Students will take on the role of historians and archaeologists, analysing evidence, reconstructing the past and solving historical mysteries. Through a range of hands-on and creative activities, students will investigate ancient societies and develop a deeper understanding of how the past continues to influence the present. Students will be guided through the ancient world by an experienced teacher with professional experience at the Colosseum and a passion for making history engaging and relevant.

Course Themes

- **Gods, Myth and the Afterlife:** Explore belief systems from Greek mythology to Egyptian burial practices and Aztec sacrifice.
- **Power, Kings and Empires:** Investigate pharaohs, emperors and rulers who claimed divine authority.
- **Warfare and Violence:** Examine Greek soldiers, Roman gladiators and Viking raids to understand how and why societies fought.
- **Society, Women and Slavery:** Compare daily life and social structures across different civilisations and hear the voices of history that were often lost.
- **Mystery and Archaeology:** Reconstruct the past through evidence, including lost civilisations like the Minoans and the legend of Atlantis.

UNLOCKING PHILOSOPHY AND ETHICS (10PHL)

Philosophy is the "love of wisdom," defined as the study of fundamental questions about existence, knowledge, ethics, reason, and mind. It uses critical thinking, logic, and rational argument to understand concepts like truth, reality, and how to live a good life. Philosophical thought shapes what people think, what they value, what they consider to be true, and how they engage with others and the world.

Philosophy is one of the foundations of all academic disciplines. We believe that in providing Year 10 students with an opportunity to study Philosophy and Ethics it will empower them to think critically and enable them to make independent judgements on the basis of truth and reason.

The Year 10 course is designed to provide opportunity to collaborate in a Socratic circle with your class peers and where you can choose to be a creative thinker and where your mind can 'run free' without limits. Questions that will be raised throughout this course include: Is abortion wrong, What is right or wrong? Is the world designed and if it is who is the designer, Is it ever all right to lie? If God is good why is there evil and suffering, Is torture wrong and what do we mean by a 'just war.' Discussions will also centre on types of friendship, free will, the scientific method, euthanasia and world religions.

Students will be introduced to some legendary Philosophers such as Plato, Aristotle, Socrates, Locke and Nietzsche. The course deals with issues that have challenged human beings for centuries and continues to perplex them today. You will engage in regular discussion where every view is welcome, although every view will be challenged. We will also explore Philosophy through film such as The Matrix and discuss ethical dilemmas like The Trolley Problem as we learn to partake in guided meditation.

This course will facilitate a personal awareness of individual views and opinions. Philosophy and Ethics aims to produce intelligent thinkers who are confident in issues that concern us. This is an exciting course which unlocks the world of Philosophy and Ethics to Year 10 Students.



ELECTIVE COURSES

ARTS

The following courses are on offer in The Arts learning area:

| | | | | |
|--------------------|------------------------------------|------------------|------------------------------------------------------------------------------------------------------------|---------|
| DRAMA | Drama Production and Performance | 10DPP | Semester Course | \$21 |
| | Drama Intensive | 10DRT | Semester Course | \$21 |
| MEDIA | The Power of Persuasion | 10MEPP | Semester Course | \$40 |
| | Media Practice in Theory | 10MEPT | Semester Course | \$40 |
| MUSIC | Music Mastery (On Grid) | 10MUMA 10MUMB | This is a year long course that includes: • Class Music • Instrumental Music • Ensemble Music | \$55 |
| | Music Mastery (Off Grid) | 10MUMOG | | \$55 |
| | Production & Performance (On Grid) | 10MUPA 10MUPB | | \$55 |
| VISUAL ARTS | Creative Arts | 10VAA | Semester Course | \$47 |
| | Advanced Drawing & Painting | 10VAB | Semester Course | \$57.50 |
| | Digital Arts | 10VAC | Semester Course | \$47 |

** Costs are estimates and are subject to change.*

DRAMA

There are two elective courses available for students interested in studying Year 10 Drama.

DRAMA PRODUCTION & PERFORMANCE (10DPP)

Perfect for anyone thinking of enrolling in the Certificate II Creative Industries, or as a complementary unit to Radical Theatre for those who are planning on a Year 11/12 Drama pathway. This class is all about getting to know two of the backstage design roles and bring your script to life!

In this unit, students will be given opportunities to develop their knowledge and skills with an emphasis on the valuable inner workings of theatrical productions. They will undergo the essential phases of a design process using iconic Australian plays as a creative brief. The aim is to understand the preparation that goes into a production intended for a wider external audience.

Students will be given the opportunity to choose two design elements from the following:

- Set Design | Costume | Sound Design | Stage Makeup

Students will be able to demonstrate their awareness in performance of drama forms and styles, spaces of performance and design and technologies to communicate dramatic meaning and to impact performance.

YEAR 10

DRAMA INTENSIVE (10DRT)

Burn down the system! For the intelligent rebel, Radical Theatre examines how theatre has been used to protest, shock and challenge ideas and society. Entire new ways of presenting plays and acting have been created. We will look at how to act and direct performance in Epic Theatre, Verbatim Theatre, and Theatre of the Absurd. Your knowledge and skills of acting and theatre will be radically extended with Radical Theatre.

There comes a time when silence is betrayal
– Martin Luther King

DRAMA COURSE PATHWAYS

The Year 10 Drama courses lead to the following ATAR, General and Vocational pathways:

| YEAR 10 | YEAR 11 | YEAR 12 |
|-----------------------------------------------|-----------------------------------------------------------------------|---------|
| Drama Production and Performance 10DPP | Certificate II Creative Industries Drama – General Drama – ATAR | |
| Radical Theatre 10DRT | | |

MEDIA

There are two elective courses available for students interested in studying Year 10 Media.

THE POWER OF PERSUASION (10MEPP)

This course focuses on the persuasive messages the media creates for audiences examining different forms of media and the impact of changing technologies on society. It investigates how we use those technologies to communicate. Typical productions of this unit include short documentaries and music videos.

MEDIA PRACTICE IN THEORY (10MEPT)

This course is designed to extend students, who already have media production skills and who have a strong interest in the media.

It is an intensive production unit that invites students to create high quality media works. Students will be required to complete some set tasks and will then have the opportunity to negotiate the medium and genre of their major production. It is an opportunity for students to refine their media skills with maximum freedom to be creative.

This course is highly beneficial to those students considering Media Production and Analysis as Year 11 and 12 subjects.

| YEAR 10 | YEAR 11 | YEAR 12 |
|----------------------------------------|-----------------------------|---------|
| The Power of Persuasion 10MEPP | Media General Media ATAR | |
| Media Practice in Theory 10MEPT | | |

YEAR 10

MUSIC

MUSIC MASTERY (10MUMA & 10MUMB)

This course highlights the extreme limits of music and music making as we explore different sound worlds and technologies. This course asks students what do you believe? Use your voice, make a difference and embrace protest music in all its forms.

In this class you will develop skills to create your own movie soundtrack, gaming score and use recording technologies to extend compositional possibilities beyond the traditional stave. Music is a year-long course and is only available to Music Program students.

All three components of the Music course are compulsory. Students must complete all components as a part of their Year 10 Music studies. The Music course includes three components:

- Class music
- Instrumental sessions
- Ensemble music

CLASS MUSIC

Class Music may be completed as either:

| | | | |
|--------------|------------------|---------|-----------------------------------------|
| Music | 10MUMA 10MUMB | On-Grid | Scheduled during the regular school day |
| Music | 10MUMOG | On-Grid | Before school twice per week |

In class music students will develop their skills in aural perception, as well as, learn basic music theory. Students develop skill in expressing themselves through music composition and arrangement activities, whilst gaining appreciation of music from different eras, cultures and styles. Successful completion (minimum C grade achievement) of class and instrumental music programs during Years 8 and 9 are needed to enter this program in Year 10.

Students may choose to select Class Music as an 'off-grid' option. Classes are run before school twice a week. Attendance is compulsory and is recorded as with all classes.

INSTRUMENTAL SESSIONS

Students may be granted permission to continue with private tuition but all other components of the course, including playing in an ensemble, must be completed within the school. The instrumental teacher reports on the student's instrumental progress, each semester. The instrumental teacher will decide on the appropriate program and repertoire for the student in preparation for their Senior School courses.

ENSEMBLE MUSIC

It is compulsory for students to perform in an ensemble as a part of their music studies program and it is a requirement to engage in extra curricular ensemble performances and rehearsals outside of school hours.

MUSIC PRODUCTION & PERFORMANCE (ON GRID ONLY) (10MUPA & 10MUPB)

Perfect for anyone thinking of enrolling in the certificate III Music Industry, or as a complementary course for Music Mastery.

This course covers a broad range of areas within the music industry. Students develop their skills in the areas of sound production for concerts as well given the opportunity to choose their preferred genre in creating;

- sound designs
- sound scapes
- basic music recording and importantly
- song writing and composition

YEAR 10

Students will have the opportunity to perform with ensembles and continue with their instrumental lessons through the IMSS program.

MUSIC COURSE PATHWAYS

Students can use their involvement in music in university entry portfolios and credit points towards achieving WACE. Class music also prepares students in the fundamentals for continuing their Music studies including:

| YEAR 10 | YEAR 11 | YEAR 12 |
|-----------------------------------------------------------------|--------------------------------------------------------------------------------------------|---------|
| Music Mastery 10MUMA (On Grid) 10MUMB | PIMS Course (Instrumental Only) Music – Certificate III in Music Industry Music ATAR | |
| Music Mastery 10MUMOG (Off Grid) | | |
| Production & Performance 10MUPA (On Grid) 10MUPB | PIMS Course (Instrumental Only) Music – Certificate III in Music Industry | |

VISUAL ARTS

There are three elective courses available for students interested in studying Year 10 Visual Arts.

CREATIVE ARTS (10VAA)

This highly practical course provides students with a stimulating, hands-on learning experience. Using simple processes, research, and inspiration from other artists, students will develop original artwork in a relaxed and enjoyable environment. They will explore design alternatives and use a range of techniques, materials, and processes to create artwork for embellishing a skate deck. No previous knowledge or special skills are required, and students will complete at least one work for display, laying the foundation for a lifelong journey of creative awareness and artistic exploration.

ADVANCED DRAWING & PAINTING (10VAB)

Take your drawing and painting skills to the next level in this intensive Visual Arts course.

This intensive course is designed for students who wish to unlock their creative potential and is ideal for those who are keen to take their artistic skills to the next level. It is designed for students who have a strong or growing interest in the Visual Arts. This intensive course will help students learn the secrets to creating highly realistic drawings and paintings. Students will create detailed drawings using careful observation of complex subject matter. Students will learn about representation, spatial awareness and compositional design. Advanced drawing techniques will lead to resolved studio paintings for display.

This course will prepare you for the Year 11 ATAR course. It will give you the head start you need to develop strong drawing and painting skills to be successful right from the start!

YEAR 10

DIGITAL ARTS (10VAC)

This course is for those students who are particularly interested in working digitally. In this course you will explore links to previous years understandings of arts elements and principles, working digitally rather than with traditional materials on a series of digital drawing activities that allow you to further explore the art capabilities of your computer.

You will also look at the artworks of artists who initiated the crossover of digitally created art into the contemporary art world.

VISUAL ARTS COURSE PATHWAYS

The Year 10 Visual Arts courses leads to the following General and ATAR pathways:

| YEAR 10 | YEAR 11 | YEAR 12 |
|----------------------------------------------|-----------------------------------------|---------|
| Creative Arts 10VAA | Visual Arts General Visual Arts ATAR | |
| Advanced Drawing & Painting 10VAB | | |
| Digital Arts 10VAC | | |

For further information:

Lynda Kuntjy
Program Coordinator
Visual Arts (Media and Visual Art)

lynda.kuntjy@education.wa.edu.au

Michelle deRozario
Program Coordinator
Performing Arts (Drama and Music)

michelle.derozario@education.wa.edu.au

HEALTH & PHYSICAL EDUCATION

The following courses are on offer in the Health & Physical Education Learning Area. Please note, if chosen, these elective courses are studied in addition to the compulsory Physical Education program

| | | | |
|------------------------------------|--------|-----------------|------|
| Outdoor Education | 10PEOE | Semester Course | \$60 |
| Advanced Physical Education | 10PEAD | Semester Course | \$65 |
| High Performance Volleyball | 10PEVB | Semester Course | \$40 |
| Health in Action | 10PEHA | Semester Course | \$20 |

OUTDOOR EDUCATION (10PEOE)

Through interaction with the natural world, the Outdoor Education option aims to develop an understanding of our relationships with the environment, others and ourselves, and ultimately contribute towards a sustainable world. The integrated approach within this course allows for practical activities, theoretical concepts, and relationship with the environment to be incorporated into a meaningful program of learning. It provides students with an opportunity to develop essential life skills and physical activity skills, an opportunity to develop a comprehensive understanding of the environment and develop a positive relationship with nature. The course aims to develop self-awareness and leadership through opportunities to plan for, and facilitate, outdoor experiences. Contexts include navigation, canoeing, survival skills and roping and provides students with exposure to skills required to be successful in Year 11 and 12 Outdoor Education.

The 4 areas covered are:

1. Canoeing
2. Bush Cooking
3. Orienteering
4. Survival Techniques

OUTDOOR EDUCATION ARRANGEMENTS

CANOEING: Students will need to be at school by 7.15am or finish school at 4.00pm for ONE term. The students may be able to arrive late to school or leave school early in another term to compensate the time. The Outdoor Education units require 2 hours to allow the students to be transported to outside venues.

NOTE: Students must be *competent swimmers* to participate in **OUTDOOR EDUCATION**.

ADVANCED PHYSICAL EDUCATION (10PEAD)

This course is designed for high-achieving students with a strong passion for Physical Education who are seeking to extend beyond the general PE program. Using a holistic, game sense approach, students will further develop their tactical understanding, decision-making and performance across a range of sports tailored to cohort ability and interests. The course will endeavour to utilise specialist facilities within the local community, such as Mount Lawley Golf Club, Mirrabooka Squashworld and Mount Lawley Tennis Club, providing authentic and diverse learning experiences. Students will also develop advanced communication, leadership and teamwork skills, building a strong foundation for future pathways including Physical Education Studies and Certificate II Sport Coaching.

HIGH PERFORMANCE VOLLEYBALL (10PEVB)

The High Performance Volleyball elective is designed for students with a strong interest in developing their skills and understanding of the game. Students will refine advanced techniques, strategies and tactics while exploring key concepts such as effective warm-up and cool-down routines, training methods, positional play and umpiring. Learning is applied through structured drills and competitive gameplay scenarios, allowing students to develop both individual performance and team cohesion. This course responds to the growing interest in Volleyball within the school, provides a pathway into the MLSHS Volleyball Squad, and supports students aspiring to trial for Volleyball Nationals teams, while making full use of the excellent facilities available in the MLSHS Gymnasium Centre.

HEALTH IN ACTION (10PEHA)

This course is designed to spark your interest in understanding health, your own, and the health of the world around you. You will explore real-life issues that impact young people and examine how these influence overall wellbeing. Are you interested in a job within the health industry? Or how we can improve health in our community? This course explores real-world health issues and helps you understand the choices people make every day. Throughout the course, you will learn about Health Promotion including the Ottawa Charter and the Health Promoting Schools Model. You will develop skills in analysing, applying and evaluating health information and social marketing while building your health literacy and confidence in making informed decisions. Over the semester, you will take part in a range of practical and interactive activities, including designing your own health promotion campaign to address a current issue and exploring the environments you live, work and play in. These experiences will support the development of important life skills such as communication, decision-making and self-management.

| YEAR 10 | YEAR 11 | YEAR 12 |
|-------------------------------------------|-----------------------------------------------------------------------------------------------------------------------------------------------------|---------|
| Outdoor Education 10PEOE | Physical Education Studies – ATAR Physical Education Studies General Outdoor Education – General Certificate II in Sport Coaching | |
| Advanced Physical Education 10PEAD | Health Studies General Health Studies ATAR Physical Education Studies ATAR Physical Education Studies General Cert II in Sport Coaching | |
| High Performance Volleyball 10PEVB | Physical Education Studies ATAR Physical Education Studies General Cert II in Sport Coaching | |
| Health in Action 10PEHA | Health Studies General Health Studies ATAR | |

For further information contact:

Adam Zen
Program Coordinator - Health & Physical Education
adam.zen@education.wa.edu.au

YEAR 10

HUMANITIES AND SOCIAL SCIENCES (HASS)

In addition to the compulsory HASS course, Year 10 students can choose elective courses Psychology, Aboriginal Studies, Criminal Minds and/or Business. These semester long courses are not pre-requisites for Year 11 courses but they will pique interest in students considering studying courses such as Psychology and/or Politics and Law in Senior School. Students will develop their analytical skills and expand their perspectives on a range of social issues.

| | | | |
|-------------------------------|-------|-----------------|------|
| Aboriginal Studies | 10AIS | Semester Course | \$20 |
| Accounting and Finance | 10ACF | Semester Course | \$20 |
| Criminal Minds | 10CRM | Semester Course | \$20 |
| Psychology | 10PSY | Semester Course | \$20 |

CRIMINAL MINDS (10CRM)

This course is to pique your interests in the investigative field of police, forensics and law. Not only with investigations but to expose you to the legal profession and how it is approached, the world of investigative law. You will learn about infamous criminals and forensic psychology.

Are you interested in collecting and analysing evidence? This could be the segue between society, science and law; between human nature; evidence and hearsay; between understanding, assumptions and proof. This elective covers all the ins and outs of criminal investigations including: collecting physical evidence like fingerprints and tyre tracks, reconstructing crime scenes, analysing real life crimes and conspiracies.

Over one semester you will study both practical and theoretical topics that will help build the analytical skills needed for Year 11 and 12. Sign up for Criminal Minds, become the investigator, the prosecutor and the defender. This is an introductory course to Year 11 Politics and Law and may help in Year 11 Psychology (General) Year 11. However, it is NOT a pre-requisite for either Year 11 courses.

Politics and Law Pathway

| YEAR 10 | YEAR 11 | YEAR 12 |
|-------------------------------|-------------------------------------------|---------|
| Criminal Minds (10CRM) | Psychology General Politics & Law ATAR | |

ABORIGINAL STUDIES (10AIS)

Aboriginal Studies is for students who enjoy learning through experience, questioning the world around them, and engaging in meaningful conversations about culture and identity. In Aboriginal Studies, students are given the opportunity to engage with a rich variety of incursions and guest speakers, which include Noongar language workshops and interactive activities that explore the relationships between the diverse First Nations Peoples of Australia.

The course also includes a cultural walking tour of Kings Park where a Traditional Owner shares stories of Whadjuk Country and the history of Noongar people in Perth and Kings Park. Students learn about the diversity of Aboriginal societies and cross-cultural interaction between Aboriginal and non-Aboriginal Australians, past and present, using a process of social inquiry. Topics include in-depth studies of Indigenous languages, relationships with the environment and the ways in which Indigenous peoples survived in Australia's harsh climates, traditional and contemporary Indigenous art and music, and significant Indigenous historical and modern figures.

YEAR 10

The priority for this course is to ensure that Indigenous perspectives are presented by the local Indigenous community. Aboriginal histories and cultures are fundamental to the development of Australian identity and the formation of contemporary Australian society. The exploration of Aboriginal cultures, past and present and how Aboriginal Peoples interact with other sociocultural groups provides a logical starting point for the exploration of cultural identity. In this course, students explore and investigate the concept of culture, and how cultures interact with one another and with their environment.

Aboriginal Studies Pathway

| YEAR 10 | YEAR 11 | YEAR 12 |
|-----------------------------------|----------------------------------------------------------------------------------------------------------------------------------------|---------|
| Aboriginal Studies (10AIS) | Aboriginal and Intercultural Studies General Aboriginal and Intercultural Studies ATAR All HASS, English, Science & Arts Courses | |

PSYCHOLOGY (10PSY)

In Year 10 Psychology we deal with understanding “self”, by looking at biological reasons for behaviour, how the brain works and how people change as they get older. Then we consider interaction with others and society. We look at friendship groups, culture and society’s values.

Do you often wonder why people behave the way they do? Do you think about why people are friends with each other? Why is it that sometimes you remember things well but at other times you simply forget? Why do some people enjoy participating in ‘risky’ sports, while others prefer a ‘quiet life?’ Psychology is concerned with the whole range of human thinking, emotion and behaviour.

Psychology is very useful, both to individuals assisting us to improve ourselves and our relationships and to society as a whole. In this course students gain valuable insights into both themselves and their worlds. This is a great introduction to Psychology in Year 11. It is not a prerequisite to Year 11.

Psychology Pathway

| YEAR 10 | YEAR 11 | YEAR 12 |
|---------------------------------|---------------------------------------|---------|
| Psychology (Intro) 10PSY | Psychology General Psychology ATAR | |

ACCOUNTING AND FINANCE (10ACF)

In a few years’ time when you are all working in some capacity, either for someone else or you may be running your own small business, having a basic understanding of accounting and financial record keeping concepts and also having some basic understanding of how to manage your own personal finances will be a great advantage to you.

The “World of Business” is very diverse; there is something to suit almost everyone. Business is conducted at every level in all different types of organisations. Almost every industry you can think of – music, fashion, entertainment, sport – employs Accountants, Marketing Managers, Business Managers, Clerical Staff, Financial Officers, all of which play a big part in helping to run the business.

Learning and studying Business subjects prepares you to work in a great variety of settings, ranging from corporate, government and not-for-profit organisations, both in Australia and around the world. In this course, students will be introduced to the fundamentals of some basic accounting and record keeping concepts used in every business environment.

In our current economic environment, where small businesses are the largest employers, many students will find themselves self-employed and there is a high probability that they will have to engage in some form of basic accounting and personal financial management practices.

Financial literacy gives individuals the ability to make sound financial judgements. Students will be introduced to financial literacy which will give them an understanding of the importance of being able to make informed decisions about personal finances and taking responsibility for their own financial decisions in the future.

Module 1: Accounting for small cash entities

Module 2: Personal Financial Management

- | | |
|------------------------------------------------------------------------------------------------------------------------------------------------------------------------------------------------------------------------------------------------------------------------------------------------------------|----------------------------------------------------------------------------------------------------------------------------------------------------------------------------------------------|
| <ul style="list-style-type: none"> • The accounting equation • Accepted basic accounting principles • Simple definitions of fundamental accounting terms • Presentation of financial information in the form of business report: balance sheet, income statement | <ul style="list-style-type: none"> • Banking and managing your money • Credit and debt • Personal financial goals • Budgeting • Insurance |
|------------------------------------------------------------------------------------------------------------------------------------------------------------------------------------------------------------------------------------------------------------------------------------------------------------|----------------------------------------------------------------------------------------------------------------------------------------------------------------------------------------------|

Business, Accounting and Finance Pathway

| YEAR 10 | YEAR 11 | YEAR 12 |
|--------------------------------------------|-----------------------------------------------------------------------------------------------------------------------------------------|---------|
| <p>Accounting and Finance 10ACF</p> | <p>Business Management & Enterprise General</p> <p>Accounting and Finance ATAR</p> <p>Business Management & Enterprise ATAR</p> | |

For further information contact:

Kieren Pearce
 Program Coordinator - Humanities and Social Sciences (HASS)
 kieren.pearce@education.wa.edu.au

TECHNOLOGIES

The Western Australian Curriculum describes Technologies as two distinct but related subjects:

DESIGN AND TECHNOLOGIES, in which students use design thinking and technologies to generate and produce solutions to authentic needs and opportunities.

DIGITAL TECHNOLOGIES, in which students use computational thinking and information systems to define, design and implement solutions.

The following Courses are on offer in the Technologies Learning Area:

DESIGN AND TECHNOLOGIES

| | | | |
|------------------------------------------|-------|-----------------|-------|
| Café Studies | 10CST | Semester Course | \$120 |
| Clothing Designs | 10CL | Semester Course | \$50 |
| Childcare | 10CC | Semester Course | \$50 |
| International Foods | 10INF | Semester Course | \$120 |
| Dimensional Design - 3D Modelling | 10DD | Semester Course | \$60 |
| Engineering | 10EN | Semester Course | \$40 |
| Engineering - Metals | 10ME | Semester Course | \$60 |
| Materials Design - Wood | 10MDW | Semester Course | \$60 |
| Photography | 10PH | Semester Course | \$55 |

DIGITAL TECHNOLOGIES

| | | | |
|---------------------------------------|-------|-----------------|------|
| Applied Information Technology | 10AIT | Semester Course | \$25 |
| Computer Science | 10CSC | Semester Course | \$25 |
| Robotics | 10ROB | Semester Course | \$25 |

DESIGN & TECHNOLOGIES

CAFÉ STUDIES (10CST)

This unit covers the purpose of a Café, the trading facilities, the food ordering system, presentation of food and menu planning principles. Students will become practised at preparing and serving a range of foods typically available in Cafés.

They will respond to design briefs and produce:

- biscuits, cookies and muffins
- bread and yeast products
- pasta based foods
- typical café breakfasts, lunch and dinner meals
- hot and cold beverages
- a written component to this course related to the above areas of study.

This unit provides a background for those students wishing to pursue Hospitality Studies or for those who have a personal interest in the area of food.

YEAR 10

CLOTHING DESIGNS (10CL)

Making their own fashion garments provides students with a creative and practical lifelong skill. In this unit students are encouraged to be creative in making clothes and/or textile products for themselves or family members. They are encouraged to try a variety of designs for garments and fashion accessories and are expected to complete a minimum of two articles along with developing a working knowledge of using a commercial pattern. Students must supply fabric for the garment they construct. Technology skills developed in this unit provide useful background for any of the Home Economics pathways offered in Senior School, in particular CFC General.

CHILDCARE (10CC)

Through a range of practical activities and work with young children, students will learn how to provide for the needs of the child from conception to 3 years. They will prepare and serve foods suitable for babies and toddlers and practise skills for changing babies and dealing with crying and unsettled babies. The students will learn about SIDS and how to avoid this when caring for young babies. They will implement play activities and observe children through various stages of development. Practical activities may include organising activities for children, making toys and musical instruments and visits to childcare centres. This unit provides a background for those students willing to pursue Children, Family and Community General in Year 11 and 12.

INTERNATIONAL FOODS (10INF)

In this unit, students will investigate, devise, produce and evaluate foods in a range of cultures. They will complete a number of challenges which may include the following areas:

- The meal patterns of different countries including the influences of their food, celebrations and specialities
- The presentation and preparation of a food truck meal.
- Food Preparation and service of a variety of dishes from around the world.

Students are encouraged to be adventurous and try different foods while developing a tolerance and understanding for the ways of multicultural Australia.

There is a written component of the course related to the above areas of study. This unit provides a background for those students wishing to pursue Hospitality Studies or for those who have a personal interest in the area of food.

DIMENSIONAL DESIGN - 3D MODELLING (10DD)

Dimensional Design - 3D Modelling is the process of creating a product through the multiple design stages of concept development and prototyping. This course will allow students to develop skills and knowledge from the visual development stage through to development mock-ups and the finished product. Students will manifest their ideas into high quality manufactured products using a combination of traditional workshop practices, Computer Aided Design (CAD) and Computer Aided Manufacturing (CAM) 3D printing and laser cutting technology.

Dimensional Design projects may include:

- rapid prototyping
- jewellery design
- designing for the user

ENGINEERING (10EN)

Engineering is a STEM based subject focusing on real life Technological and Engineering solutions. This course provides students with opportunities to be innovative and use their creativity when designing and producing projects. Engineering provides a focus on practical problem-solving incorporating core understandings of how Scientific concepts and technology processes are used in Engineering. A student will be provided with opportunities to investigate, research and construct engineering projects.

Engineering projects may include:

- CO2 Racer
- Rockets
- Ballon Car
- Water Rocket
- Bridges
- Rubber Band Car
- Mousetrap Car

YEAR 10

ENGINEERING - METALS (10ME)

Engineering - Metals introduces a student into the skills, techniques and practices required by the engineering industry and the manufacturing sector. Essentially a “Hands-on” practical based course. Engineering Metals projects will provide students with opportunities to develop machining, oxy acetylene welding and sheet metal techniques. Students will be required to transfer theoretical knowledge to practical activities across a range of metal projects. Practical skills will develop with increasing confidence, independence and collaboration. A student would be required to participate in safety training as mandated by the DOE and follow Safe Operating Procedures when using power tools and equipment. Establishing safety procedures that minimise risk while maintaining safety standards will ensure success in a workshop environment.

Engineering Metals projects may include:

- Tool tray
- Parts box
- Horseshoe nail person
- Spinning dice
- Candle holder

MATERIALS DESIGN - WOOD (10MDW)

Materials Design - Wood introduces a student into the skills, techniques and practices required by industry and the manufacturing sector. Essentially a “hands-on” practical based course, Materials Design [Wood] will develop the students’ ability to identify the steps involved in planning the production of a designed solutions using wood. Students will be given the opportunity to be innovative and use their creativity when designing and producing projects made of wood. Practical skills will develop with increasing confidence, independence and collaboration. Students will be required to transfer theoretical knowledge to practical activities across a range of wood projects.

Materials Design - Wood projects may include:

- box and frame construction techniques (jewellery box)
- serving tray
- utility box
- folding stool and/or footstool
- occasional table

PHOTOGRAPHY (10PH)

Photography provides opportunities for self-expression and creativity, there is scope within the course for experimentation and problem solving, which will help develop logical thinking, initiative, and resourcefulness.

Photography has its own set of theories and practices and incorporates composition techniques and principles and elements of design. This course will develop the skills and knowledge required to capture photographic images using different techniques and camera technologies. You will develop an understanding of Camera controls such as aperture and shutter speed to freeze and blur motion or create depth of field.

Students will use photography techniques and photoshop editing practices to develop a Personal Portfolio that may include; portraits, still life, urban, landscape, black and white and night photography.

Design & Technologies Pathways

| YEAR 10 | YEAR 11 | YEAR 12 |
|----------------------------------|-------------------------------------------------------------------|---------|
| Cafe Studies 10CST | Food, Science & Technology General Certificate II Hospitality VET | |
| International Foods 10INF | | |
| Clothing Design 10CL | Children, Family and the Community General | |
| Childcare 10CC | | |

YEAR 10

| YEAR 10 | YEAR 11 | YEAR 12 |
|-----------------------------------------------|-----------------------------------------------------------|---------|
| Dimensional Design - 3D Modelling 10DD | Dimensional Design General | |
| Engineering 10EN | Engineering Studies General Engineering Studies ATAR | |
| Engineering - Metals 10ME | Certificate II Engineering Engineering Studies General | |
| Materials Design-Wood 10MDW | Materials Design Technology Wood General | |
| Photography 10PH | Certificate II Visual Art Photography VET | |

DIGITAL TECHNOLOGIES

APPLIED INFORMATION TECHNOLOGY (10AIT)

This course is a continuation of computer concepts for everyone. The course will further explore the topics of digital images, animations and associated media tasks. Students will use the advanced features of Adobe Suite of applications to create digital solutions. The tasks will develop students' planning, designing and problem-solving abilities, as well as encouraging interdependent learning. The knowledge and skills explored will set them up on a journey to become well prepared for life and careers in the rapidly changing digital world.

COMPUTER SCIENCE (10CSC)

This course is a continuation of computer science concepts for those more interested in programming and coding. The course will further explore programming and coding to develop digital applications for everyday use. Students will develop skills in program design and basic database applications. Students will understand the needs of the target audience, the importance of project management and the privacy regulations. They will investigate resources to develop increasingly sophisticated solutions, identifying and considering associated constraints and will develop their planning, designing and problem-solving abilities.

ROBOTICS (10ROB)

This course is a continuation of computer science concepts for those more interested in robotics and the digital control of devices programming. The course will explore the topics of programmed and autonomous device control. Students will develop skills in controlling robots, drones and stationary devices. Students will gain understanding of the needs of device control and the interactions in a 'people' environment. They will investigate resources to develop increasingly sophisticated solutions, identifying and considering associated constraints, and will develop their planning, designing and problem-solving abilities in a cooperative approach.

Digital Technologies Pathways

| YEAR 10 | YEAR 11 | YEAR 12 |
|---------------------------------------------|---------------------------------------------------|---------|
| Applied Information Technology 10AIT | Applied Information Technology General | |
| Computer Science 10CSC | Computer Science General Computer Science ATAR | |
| Robotics 10ROB | | |

For further information contact:

Bill Angus
Program Coordinator - Technologies
bill.angus@education.wa.edu.au

YEAR 10

Course Information Handbook 2027



MOUNT LAWLEY SENIOR HIGH SCHOOL
An Independent Public School

65 Woodsome Street, Mount Lawley WA 6050 | 08 9265 1543 (Upper School Administration)
lawley.wa.edu.au | mountlawley.shs.upperschooladmin@education.wa.edu.au