



MOUNT LAWLEY SENIOR HIGH SCHOOL

An Independent Public School

2018 Annual School Report



Maximising the enjoyment of learning and achievement for all students within a compassionate and democratic school culture and encouraging them to be responsible, creative and engaged lifelong learners.

CONTENTS

Our School and Community	Page 2
Business Plan Targets	Page 3
Student Outcomes	Page 4
Value Adding	Page 15
National Opinion Surveys	Page 22
Financial Summary	Page 23
Student Awards	Page 24



Mount Lawley Senior High School **Year 12 Prefects**

Back Row: Shaina Jones, Connor O'Hara, Connor Barnes, Joshua Marshall, Max Bostock, Alora O'Dwyer.

Front Row: Lara Twyford, Charlotte Mackiewicz, Jason Kim, Lauren McDonald, Mary Leong, Oscar Kaspi-Crutchett.

OUR COMMUNITY

Mount Lawley is a residential suburb located 5km north of the Perth CBD. It lies mostly within the City of Stirling with the southern component in the City of Vincent. It is situated adjacent to the Edith Cowan University.

Mount Lawley Senior High School provides a comprehensive educational program for the suburb and surrounding areas including Inglewood, Mount Hawthorn, North Perth, East Perth, Yokine, Dianella, Maylands and Leederville. As one of two Gifted & Talented Language schools in the state, along with the Jazz Music and Special Visual and Performing Arts programs, it attracts students from many suburbs to take advantage of the school's sound academic reputation.



THE OUTCOMES WE SEEK

DEDICATED TO LEARNING: Mount Lawley Senior High School aims to maximise the enjoyment of learning and achievement for all students within a compassionate and democratic school culture, encouraging them to be responsible, creative and engaged lifelong learners. The school community encourages the development of the Guiding Principles of the Western Australian Curriculum & Assessment Outline.

The vision of the school, 'Inspire to Aspire', articulates the broad outcomes sought for students. These are directed towards participation in society in a responsible fashion, demonstrating respect and displaying a sense of pride. In 2018, in terms of learning outcomes for students the requirements of the syllabus statements of the 8 learning areas define what is delivered during classroom instruction.

In Years 7-10 students complete a study program centred on the eight learning areas of the Western Australian Curriculum & Assessment Framework. All are compulsory.

In English, Mathematics, Science and HASS, the Australian Curriculum is implemented. In Years 11/12 students can select from a wide range of WACE courses. They may also choose to complete Workplace Learning and Certificates from the training curriculum. Parents have high expectations for their children and support the university, TAFE, traineeship and employment pathways that are available.



A Language program is available to students from Years 7-10 who gain entry through state-wide testing under the Gifted and Talented (GAT) program. In Years 7-10, the Specialist Visual And Performing Arts (SVAPA) and Jazz Music courses are also offered. A small number of Aboriginal students are involved in the Aboriginal Excellence Program. School staff implement rigorous programs that are designed to extend students and prepare them for their future. Students at-risk are catered for with a range of extension, pastoral and literacy and numeracy initiatives. Special needs students are supported with relevant programs and individual assistance. Students at Mount Lawley Senior High School are also supported by a dedicated Student Services team. They also enjoy the benefits of the P & C funded Homework Centre (Achievement Club).

A Cadets WA Bush Ranger unit is also available and provides opportunities for students to enhance team skills, leadership qualities and personal attributes.

SCHOOL BUSINESS PLAN TARGETS 2018 - 2020

The School Business Plan is underpinned by the Department of Education's Strategic Plan, the annual "Focus" documents and the Director General's Strategic Plan for WA Public Schools. The School Business Plan prioritises the work of the school over the period of the plan. Four priority areas highlight the work of the school and outline specific targets for achievement over the three years of the plan. We report on the progress each year. This is summarised below.

ACADEMIC ACHIEVEMENT TARGETS



Target is Partially Achieved



Target is Achieved by 2020

Four of the six Academic Achievement Targets (shown below) have all been partially achieved, two have been achieved. These targets are largely aspirational.

Priority Area Targets	2018	2019	2020	2018 Target Achievement
Match or better like school results in Year 12 in at least 10 subjects.				5 Subjects >= Like Schools
Achieve 'Top 50' school ranking in at least 2 "League Table" measures over the triennium.				WACE Position = 71 (188 schools) ATAR Position = 59 (148 schools)
Achieve a Median ATAR of 81.				Median ATAR 80.6 (TISC Value)
Achieve 'Top 50' school ranking for VET students.				In late in 2018, the SCSA Board decided the VET "League Table" would no longer be published.
50% of GAT students achieve an ATAR of 90 or better.				48.4% GAT students >= 90 ATAR
Year 7 and Year 9 NAPLAN mean scores in all tested domains are 3% or more above national mean scores.				Yr 7 Average - 5.64% higher Yr 9 Average - 6.2% higher
96% of students achieve numeracy and literacy standard (OLNA).				MLSHS = 96% Like Schools = 95.2%



YEAR 12 PERFORMANCE

The following table summarises the school's performance and, where possible, this is compared to State results. For some measures the State outcomes were not provided or could not be calculated.

FACTOR	SCHOOL (%)	STATE (%)
WACE Achievement	96	90.06
Students with a score of at least 75% in a WACE course	14.5	*NR
WACE students in the top third of the state	28	33.33
Offered first preference in a Tertiary Institution	65.1	78.56
Offered any of their preferences in a Tertiary Institution	94.6	94.06
Median score for WACE students	80.6	80.9
Students gaining an "A" grade in a stage 1 course	13.9	11.5
Students participating in VET *	250	*NR
Students achieving AQF Certificate 11 or higher *	86	*NR
Number of VET Qualifications Completed *	214	*NR
Offered first preference in a TAFE	Figures not available at time of publication	
Offered placement in a TAFE	Figures not available at time of publication	
Attainment Rate (55 ATAR or Certificate 11)	99.6	96

*NR - Not recorded in 2018 statistics

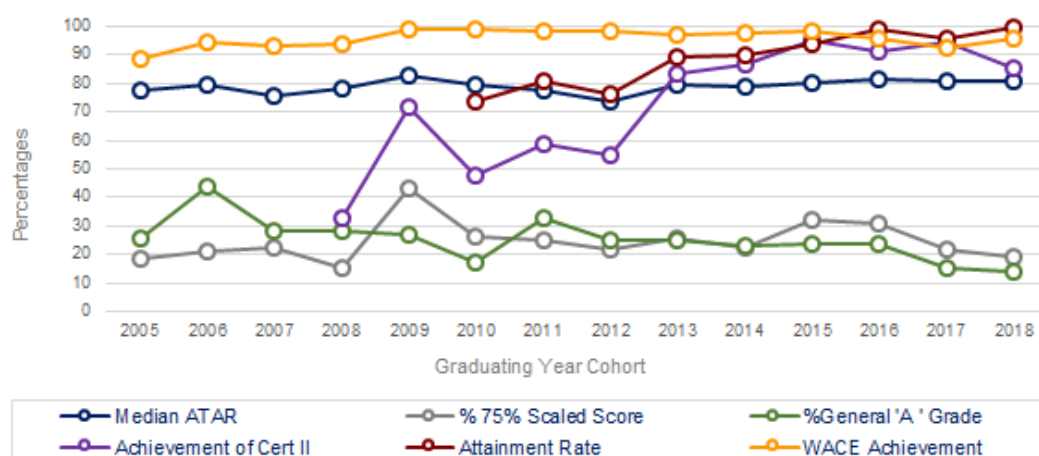
* NB Some students achieved more than 1 VET qualification

The graph (below) shows a series of performance measures over time. Key points are outlined below:

* The Median ATAR for 2018 (80.6), whilst lower than 2017 is the fourth highest result since 2005.

* The achievement of Certificate 11 or higher (94.71) is the second highest result since 2008.

* The Completion rate (99.6) is the highest achieved since 2010.



YEAR 12 PERFORMANCE - HIGHLIGHTS

- * Top 15% subject achievement: Engineering Studies, Italian as a Second Language
- * 43 students achieved an ATAR of 90 or higher and were admitted as members of the nineties club.
- * 2 students achieved an ATAR of 99 or higher (students in the top 1% of the state)



Thomas Louth (99.7)
ATAR Dux



Carly Nguyen
VET Dux



Teah Thomas
General Studies Dux



Ivan Kalinkin (99.45)
ICAS Science medal winner

- * 4 students gained one, or more, ATAR Subject Certificate of Excellence (top 0.5% of the state)



Oscar Kaspi-Crutchett
Economics & English



Daisy Alps
English



Valerie (Van Quynh) Do
English



Isabel Mountain
Psychology

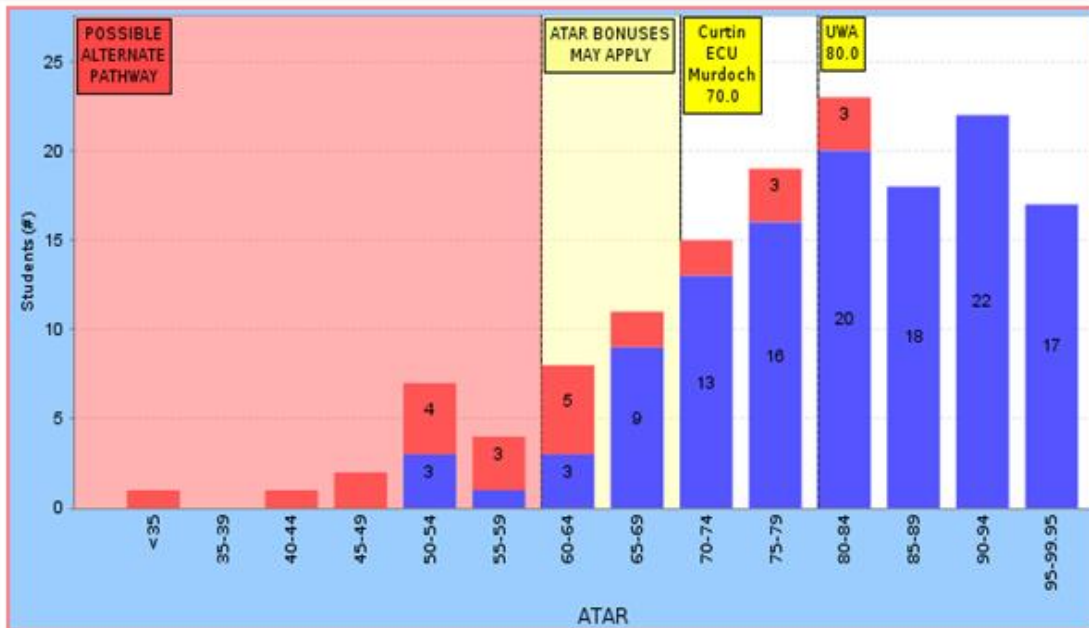
- * 16 students received Certificates of Distinction Awards:

Brooke Birch, Max Bostock, Sessina Figueiredo, Alannah Horton, Ivan Kalinkin, Oscar Kaspi-Crutchett, Donia Lal, Thomas Louth, Samuel Marcus, Isabel Mountain, Megan Nguyen, Soraya Suaimi, Shannon Radcliffe, Bojana Vladic, Tony (Zitianyu) Wang, Walid Yaqub

- * 40 students received Certificates of Merit Awards:

A'Yeen Arcilla, Nel Arseven, Mikayla Bowen, Ava Breton, Shabah Bunthawee, Elisabeth Campbell, Thaddeus Chai, Jonathon Chua, Sofia Di Chiera, Valerie (Van Quynh) Do, Katherine Esensoy, Shaina Jones, Tully Jones, Eric Jong, Soham Joshi, Chelsea Kim, Jason Kim, Shadi Kolahdouzan, Henry Lake, Mary Leong, Zoe Lim, Charlotte Mackiewicz, Emily Mayhew, Lauren McDonald, Caprice McEntyre, Peter McGirr, Mohamed Faizon (Fathima) Thabiya, Shania Moore, Keith Mwathi, Chanel Nguyen, Soraya Nik Suzaimi, Connor O'Hara, Andrew Parry, Gemma Sabbadini, Alana Sigismondi, Erynn Simcock, Michael Simons, Amy Thai, Callum Webster, Alyssa White

YEAR 12 PERFORMANCE - UNIVERSITY ELIGIBILITY - TISC APPLICANTS



The table (above) outlines the percentage of students within a series of ATAR bands. These bands are then ordered in terms of scores for entry to the four public universities in Perth. The red "caps" at the top of various columns show the number of students who did not meet the English subject score of the entry requirement. These students are eligible for an alternate entry to university. Students with an ATAR below 70 do not meet university eligibility requirements, however, students with an ATAR score between 55 and 70 are eligible for entry via alternative pathways. This table further outlines a comparatively large examination cohort at the school which includes students who may not have maximized their post-school opportunities. Staff consider this information when counselling students and parents in the most appropriate course selection pathway. VET and training based options are valid, relevant and reasonable.



YEAR 12 (2018) UNIVERSITY COURSE - OFFERS BY FIELD OF EDUCATION

84% of Mount Lawley Senior High School WACE students were offered a place in a public university with 57% gaining their first choice. The courses offered from Curtin University, Edith Cowan University, Murdoch University and the University of Western Australia are shown below. Students offered places in interstate universities are not included here.

CURTIN UNIVERSITY

Natural and Physical Sciences (3), Mathematical Sciences (1), Physics (3), Geology (1), Biological Sciences (2)

Engineering and Related Technologies (4), Chemical Engineering (1), Mechanical Engineering (3), Surveying (1), Materials Engineering (1)

Medical Studies (3), General Medicine (1), General Nursing (1), Dental Studies (1), Public Health (1), Physiotherapy (3), Occupational therapy (1), Speech pathology (3)

Early Childhood (2), Computer Science (3)

Business and Management (15), Business Management (1), Marketing (5)

Studies in Human Society (8), Psychology (9), Law (2), Society and Culture (4)

Graphic Arts and Design Studies (3), Journalism (1), Communication and Media Studies (5)

**EDITH COWAN UNIVERSITY**

Computer Science (1)

Teacher Education: Secondary (1), Teacher Education (1)

Society and Culture (1), Learning Skills Programs (8)

Communication and Media Studies (1)

**MURDOCH UNIVERSITY**

Marine Science (1), Natural and Physical Sciences (1)

Computer Science (1), Nursing (1)

Business and Management (1)

Sociology (1), Psychology (1)

NOTRE DAME UNIVERSITY

Nursing (3), Science (1)

THE UNIVERSITY OF WESTERN AUSTRALIA

Music (1)

Engineering and Related Technologies (3)

Management and Commerce (8)

Society and Culture (5), Law (1)

Natural and Physical Sciences (14), Biological Sciences (6)



VOCATIONAL EDUCATION and TRAINING STUDIES - YEAR 11 and 12 COURSES

YEAR 11 VET STUDENTS

Qualification	Cert. I	Cert II	Cert III	Cert IV	Fully Enrolled	Achieved Quals	Trainee-ships	VET students
Applied Language		11			11			11
Plumbing		2						2
Building & Construction (Pathway - Trades)		2			2			2
Conservation and Land Management		21			16			21
Business		45			34	31		45
Construction	24				4			24
Creative Industries		10			9			10
Visual Arts		36			30			36
Music Industry			7		7			7
Information, Digital Media and Technology		25						25
Engineering		2			2	1		2
Engineering Pathways		18			14			18
Government		1			1			1
Retail Cosmetics		1						1
Retail Services		2			2		2	2
Sport Coaching		44			38			44
Hospitality		39			37			39
Kitchen Operations		1			1	1		1
Tourism			1		1			1
Events			1		1			1

YEAR 12 VET STUDENTS

Qualification	Cert. I	Cert II	Cert III	Cert IV	Fully Enrolled	Achieved Quals	Trainee-ships	VET students
Applied Language		16			15	15		16
Building & Construction (Pathway - Trades)		3			2	2		3
Bicycle Mechanical Technology		2						2
Business		4			4	4		4
Business			34		29	23		34
Business				4	3	3		4
Construction	3							3
Creative Industries		21			18	18		21
Visual Arts		62			47	35		62
Music Industry			6		6	5		6
Health Services Assistance			42					42
Information, Digital Media & Technology		35			30	14		35
Engineering		2			2	2		2
Engineering Pathways		18			13	12		18
Government		1			1	1	1	1
Sport and Recreation		1			1	1	1	1
Sport Coaching		42			41	41		42
Hospitality		40			36	36		40
Commercial Cookery			1				1	1
Electrotechnology (Career Start)		2			2	2		2

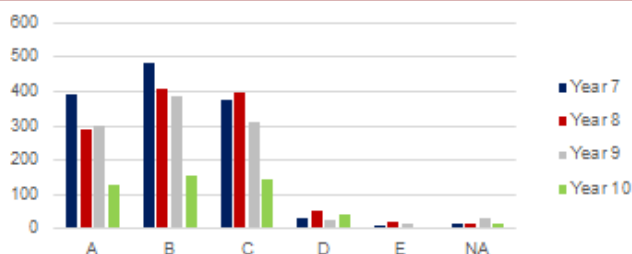
Our Vocational Education and Training program (VET) enhances the students' learning by offering an industry recognised qualification and increasing their employability skills. Students commence their qualifications in Year 11 and generally complete them in Year 12. In 2018, a large number of Year 11 Certificate II in Business students completed their qualification and will be articulating to the Certificate III in Business in Year 12. All of our VET teachers hold the Certificate IV in Training and Assessment and have maintained their industry currency. A large number also hold the qualification that they are delivering to the students. The students in our Career Link Program attend school three days per week and on the other two days attend an external training program and work experience. The programs are delivered by a variety of RTO's including North Metropolitan and South Metropolitan TAFE's and private RTO's. The courses that these students attend are generally not available at school and include Pre-apprenticeship and School Based Traineeship programs. Students who complete their VET programs can use their qualification to gain part-time and in some cases full-time employment as well as enrol in higher level qualifications at TAFE. The higher level qualifications can lead to employment and can also be used as a pathway to university.



YEAR 7 - 10 GRADE ALLOCATIONS

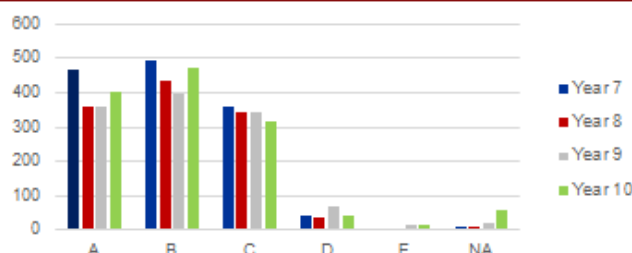
The ARTS

	A	B	C	D	E	NA
Year 7	394	482	374	34	8	14
Year 8	289	408	395	51	19	16
Year 9	298	385	311	25	17	33
Year 10	126	157	142	42	5	15



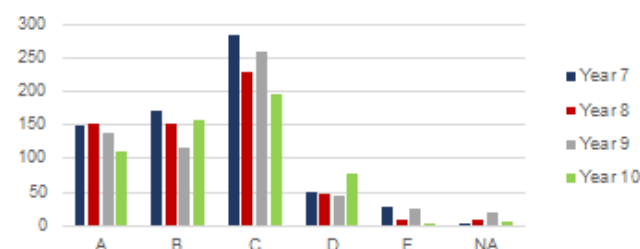
HEALTH and PHYSICAL EDUCATION

	A	B	C	D	E	NA
Year 7	466	496	359	45	2	8
Year 8	361	432	346	37	1	8
Year 9	360	396	342	68	15	19
Year 10	402	471	314	41	14	60



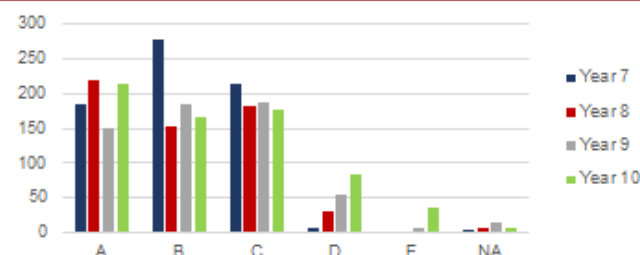
MATHEMATICS

	A	B	C	D	E	NA
Year 7	149	172	285	51	29	2
Year 8	151	152	229	46	10	9
Year 9	137	115	261	44	25	19
Year 10	112	159	196	79	1	6



HUMANITIES and SOCIAL SCIENCES

	A	B	C	D	E	NA
Year 7	184	279	214	7	0	4
Year 8	221	154	182	31	2	7
Year 9	150	185	189	55	6	16
Year 10	215	166	178	84	35	7



In WA public schools, student achievement is reported to parents as a "letter grade". The letter grades range from 'A' to 'E'. Where a student has not completed a course to a sufficient standard a "No Award" (NA) may be indicated.

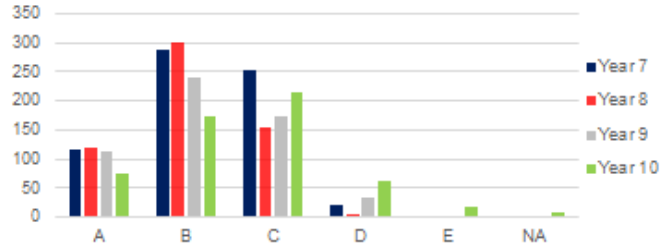
Grades are determined by moderated, teacher professional judgements. Teachers use systemic work samples to assist in these judgements. The graphs (above and on the following page) show the 2018 grading record for students in Years 7-10.

The Arts, Technologies and HPE learning areas have more grades awarded than enrolments but this is due to students completing more than one course. In Mathematics, English, Science and HASS (MESH) and Languages, grading approximates enrolment.

YEAR 7 - 10 GRADE ALLOCATIONS

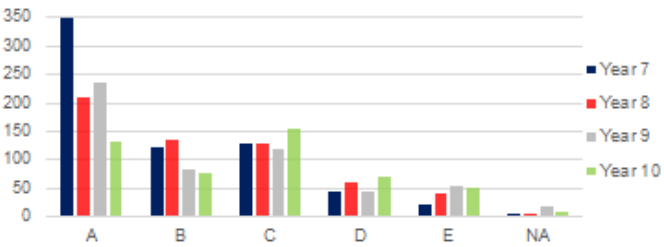
ENGLISH

	A	B	C	D	E	NA
Year 7	117	287	254	20	3	7
Year 8	121	301	154	7	5	9
Year 9	115	241	173	35	20	18
Year 10	75	174	215	62	19	8



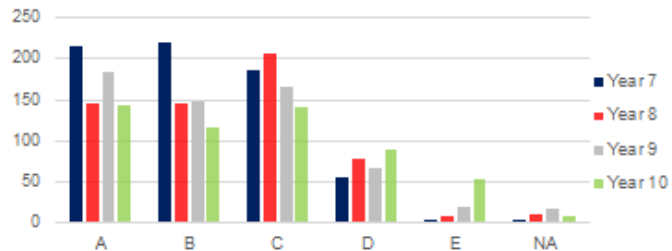
LANGUAGES

	A	B	C	D	E	NA
Year 7	348	124	129	45	21	6
Year 8	210	136	128	62	40	5
Year 9	236	85	119	45	55	20
Year 10	132	78	154	70	52	8



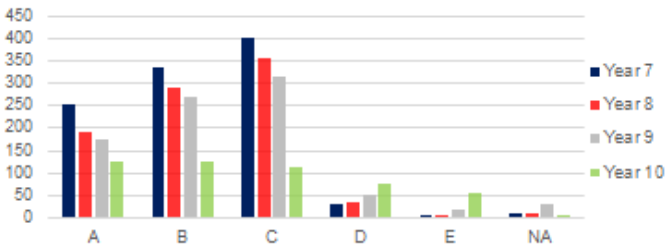
SCIENCE

	A	B	C	D	E	NA
Year 7	216	219	186	57	5	5
Year 8	146	146	207	79	9	10
Year 9	183	147	166	67	20	18
Year 10	144	116	142	89	54	8



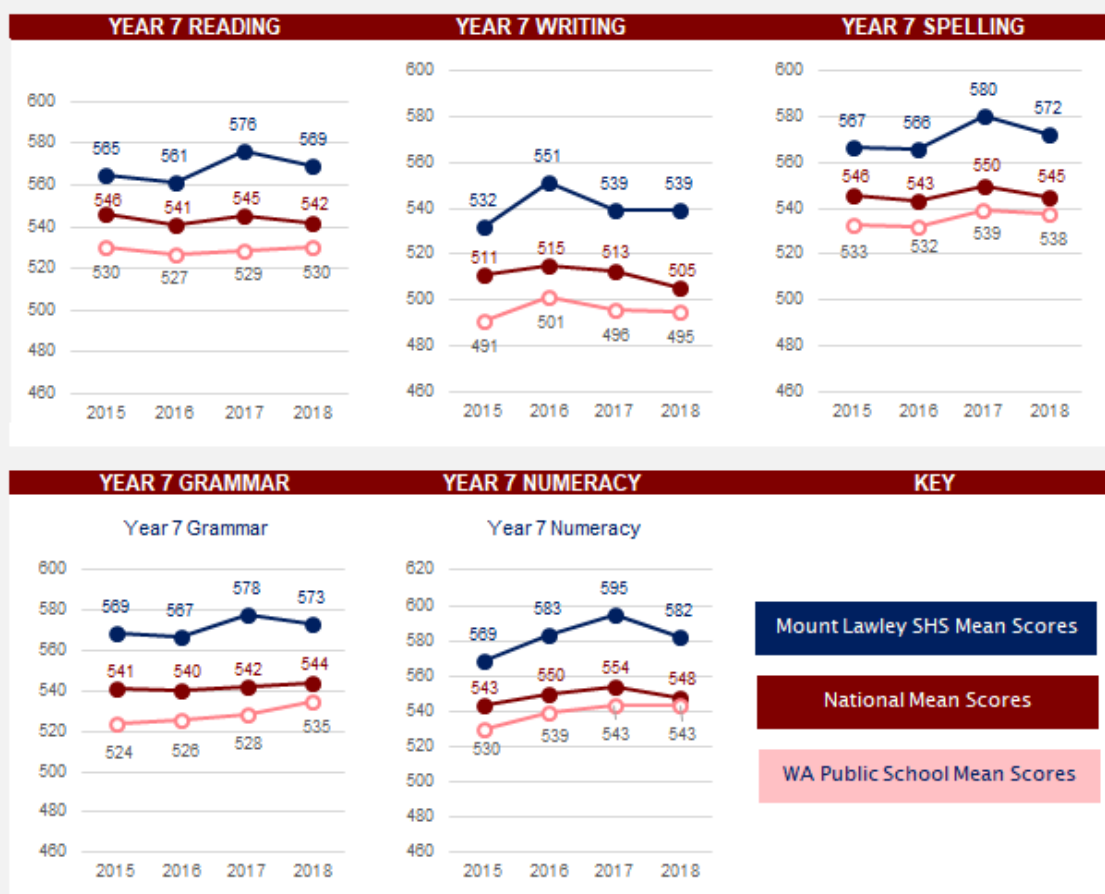
TECHNOLOGIES

	A	B	C	D	E	NA
Year 7	253	337	401	29	4	10
Year 8	191	289	358	35	6	11
Year 9	176	271	316	53	18	30
Year 10	127	125	112	75	54	7



YEAR 7 NAPLAN - Mean comparisons: National, State, Mount Lawley SHS

The National Assessment Program: Literacy and Numeracy (NAPLAN) tests are conducted in Years 3,5,7& 9. National, State and MLSHS scores for 2015-2018 are displayed.



The Year 7 Mount Lawley SHS mean scores exceeded National and State mean scores in each of the NAPLAN domains, in each of the four years (2015 - 2018), as shown above.

The Year 7 NAPLAN target as outlined in the school's 2015-2017 Business Plan was set by the School Board for the mean scores to be 3% or more above national mean scores. It was achieved in 2018 and for each year of the 2015-2017 Business Plan. This target has been retained in the 2018-2020 business plan.

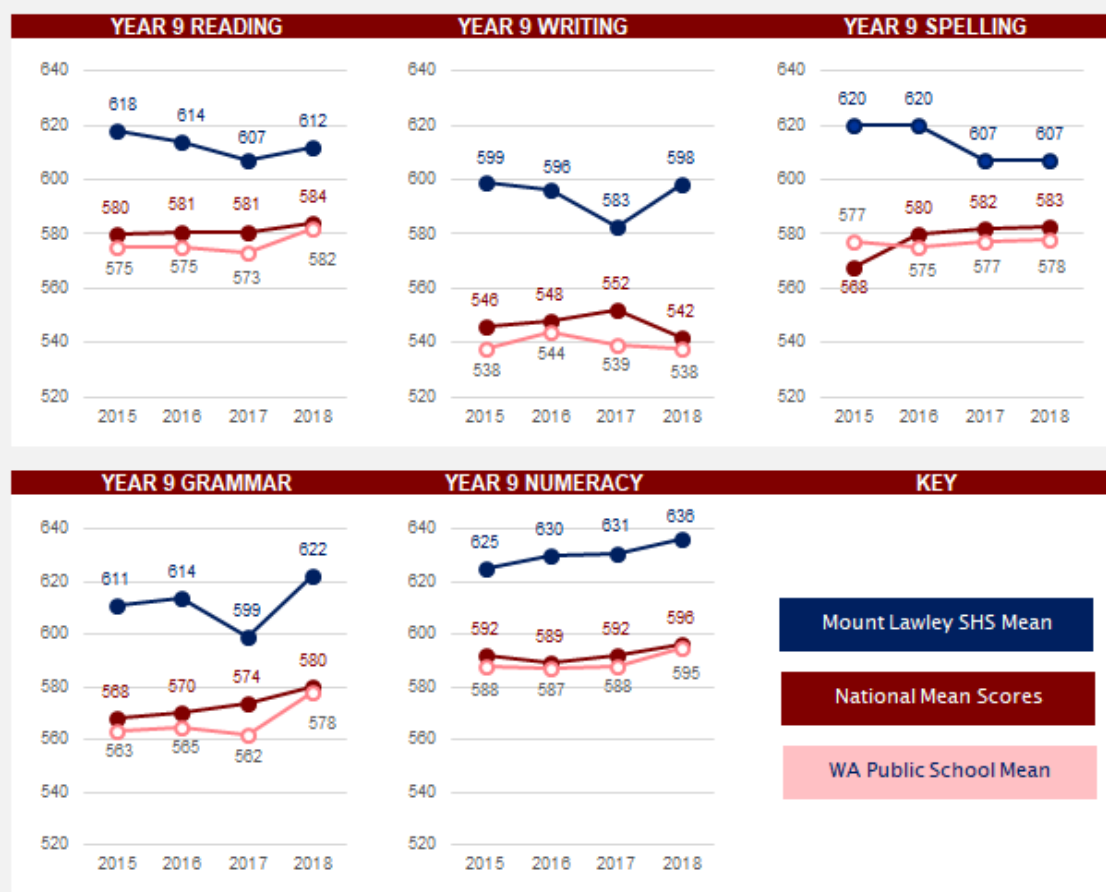
YEAR 7 NATIONAL MINIMUM STANDARDS (NMS)

	Numeracy (%)		Reading (%)		Writing (%)		Spelling (%)		Grammar (%)	
	MLSHS	WA	MLSHS	WA	MLSHS	WA	MLSHS	WA	MLSHS	WA
Above NMS	95	82	90	77	88	59	91	80	89	73
AT NMS	5	15	9	15	18	26	8	11	10	17
Below NMS	0	3	1	8	4	14	2	9	1	9

(NB: Due to rounding, some totals may not equal 100%)

YEAR 9 NAPLAN - Mean comparisons: National, State, Mount Lawley SHS

The National Assessment Program: Literacy and Numeracy (NAPLAN) tests are conducted in Years 3,5,7& 9. National, State and MLSHS scores for 2015-2018 are displayed.



The Year 9 Mount Lawley SHS mean scores exceeded National and State mean scores in each of the NAPLAN domains, in each of the four years (2015 - 2018), as shown above.

The Year 9 NAPLAN target as outlined in the school's 2015-2017 Business Plan was set by the School Board for the mean scores to be 3% or more above national mean scores. It was achieved in 2018 and for each year of the 2015-2017 Business Plan. This target has been retained in the 2018-2020 business plan.

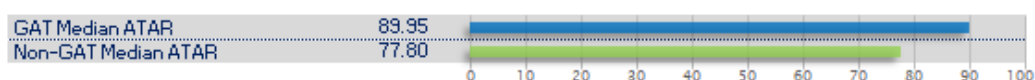
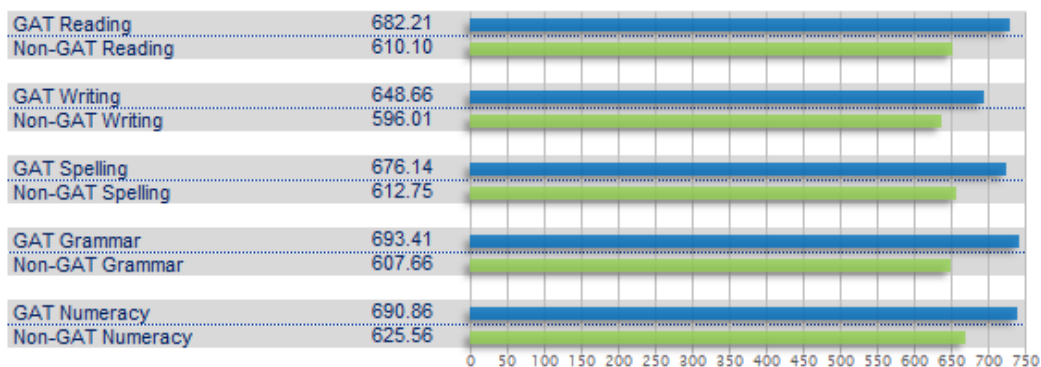
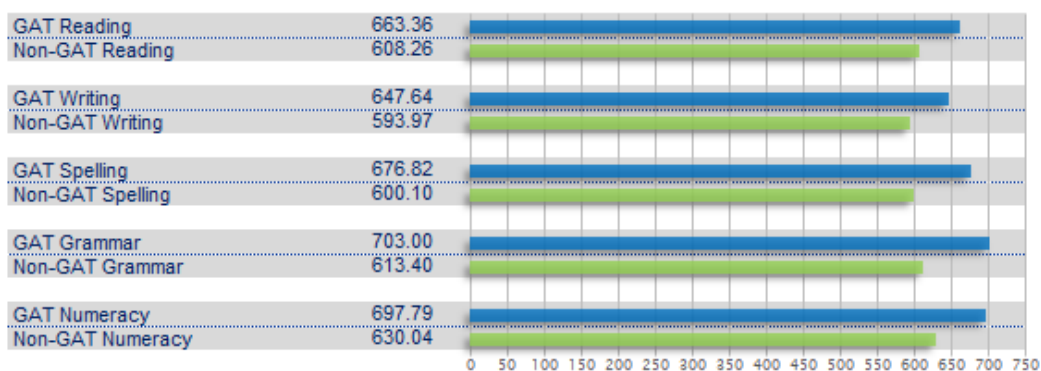
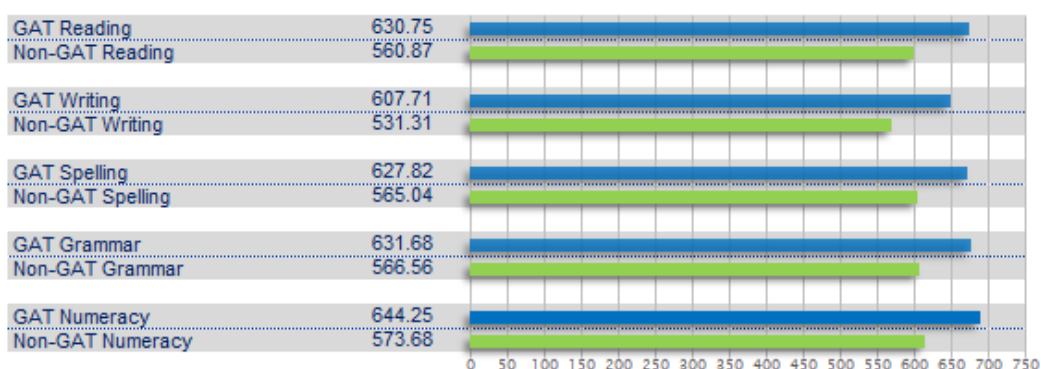
YEAR 9 NATIONAL MINIMUM STANDARDS (NMS)

	Numeracy (%)		Reading (%)		Writing (%)		Spelling (%)		Grammar (%)	
	MLSHS	WA	MLSHS	WA	MLSHS	WA	MLSHS	WA	MLSHS	WA
Above NMS	95	82	94	79	84	59	89	76	88	72
AT NMS	4	15	4	15	10	20	10	13	10	20
Below NMS	1	4	2	7	6	22	2	11	1	8

(NB: Due to rounding, some totals may not equal 100%)

GIFTED and TALENTED - LANGUAGES

Year of Schooling (2018 Graduating cohort)	2018	2017	2016	2015	2014	2013
Number of GAT students (ISL, CSL)	31	31	33	32	32	NA

Year 12 Median ATAR scores: 2018 Graduating cohort**Year 9 Mean NAPLAN scores: 2018 Graduating cohort****Year 9 mean NAPLAN scores: 2021 Graduating cohort****Year 7 Mean NAPLAN scores: 2023 Graduating cohort**

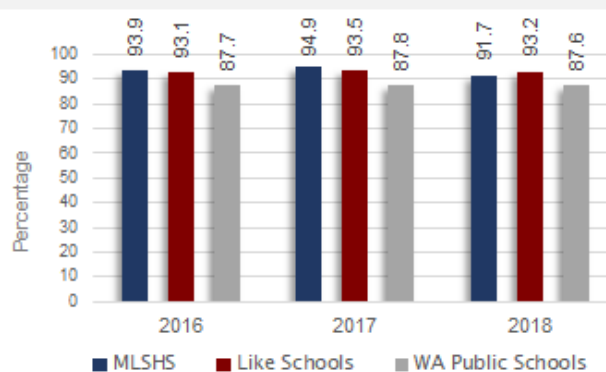
GAT student scores are higher in each measure. This is to be expected. GAT parents can have a sense of confidence the students in the GAT program are provided with an enriching, challenging and extended curriculum.

SCHOOL ATTENDANCE RATES

	Non-Aboriginal Attendance			Aboriginal Attendance			Total Attendance		
	MLSHS	Like	State	MLSHS	Like	State	MLSHS	Like	State
2016	94.0	93.2	89.5	86.6	83.0	67.4	93.9	93.1	87.7
2017	94.9	93.6	89.7	91.9	83.7	66.6	94.9	93.5	87.8
2018	91.9	93.4	89.6	85.7	78.9	66.0	91.7	93.2	87.6

Graph showing Total Attendance Rates (2016 - 2018)

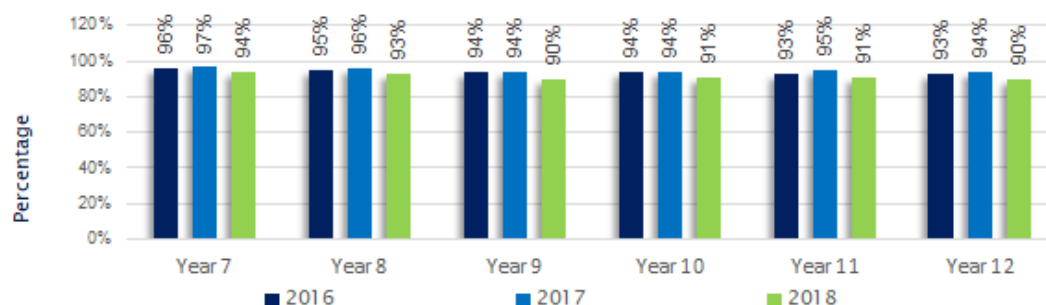
In 2018 the attendance rate for Mount Lawley Senior High School was higher than Like Schools for Aboriginal attendance but lower than Like School total attendance.



YEAR LEVEL ATTENDANCE RATES

An attendance rate of 90% is considered essential for students to maximise the learning opportunities provided at school.

	Yr 7 (%)	Yr 8 (%)	Yr 9 (%)	Yr 10 (%)	Yr 11 (%)	Yr 12 (%)
2016	96	95	94	94	93	93
2017	97	96	94	94	95	94
2018	94	93	90	91	91	90
WA Public Schools 2018	91	88	87	85	87	88



The 2018 attendance rates, are slightly lower than 2016 and 2017.

STUDENT ENROLMENTS 2013 - 2017

Semester 2	2013	2014	2015	2016	2017	2018
Lower Secondary	811	767	1013	1041	1113	1206
Upper Secondary	505	500	533	515	517	503
Total Enrolments	1316	1267	1546	1556	1630	1709

Total enrolments have increased steadily since 2015. This was when Year 7 students transitioned into WA Public Secondary Schools.

Enrolments are high and, historically, large numbers of students seek enrolment from outside the gazetted "zone" for Mount Lawley SHS. Enrolment projections, partially influenced by an expanding inner city demographic, have highlighted the need for a new inner city school which is expected to open in 2020. The "Inner City Secondary School" (planning name only) is, initially, expected to reduce enrolment pressure on Mount Lawley SHS.

VALUE ADDING: OPPORTUNITIES FOR STUDENTS - ENGLISH

The school's commitment to student engagement involves an "all encompassing" view of student life which includes, and extends, far beyond a singular focus on academic achievement. Their interests and talents are nurtured across all areas of the school via an extensive range of academic, cultural, sporting and community engagement experiences which are designed to challenge and enrich the life of students. Some of the 2018 highlights are outlined below:

FORUMS AND WORKSHOPS

- * Before and after school classes
- * Individual tutoring ECU mentoring program for EALD students
- * Extension classes - top 15% Year 12 ATAR
- * Academic task force - Revision classes



EXCURSIONS AND INCURSIONS

- *Curtin University - English & Literature Conference
- * Harmony Week Debate
- * Fremantle Literature Centre
- * University presentation for international students
- * Poetry in Action - Years 9 - 11
- * Write a Book in a Day



COMPETITIONS

- * ICAS
- * Rotary Four Way Speech
- * Debating
- * WA Young Travel Writers'
- * Roland Leach Poetry
- * Tim Winton Young Writers'
- * Micro-fiction organ donation
- * Lions Youth of the Year
- * Create an Ad
- * Scribbler's Festival - Golden Pen

VALUE ADDING: OPPORTUNITIES FOR STUDENTS - HUMANITIES and SOCIAL SCIENCES

HISTORIES – ANCIENT AND MODERN

- * Premiers Anzac Student Tour (PASST) competition – Eoen Gosteilow (Year 12) accepted for 2019 to Vietnam for ANZAC Day
- * Schools ANZAC Day competition by Department of Veterans' Affairs (DVA) – Year 9 GAT/AE/SVAPA
- * Simpson Prize competition for Y9 and Y10
- * AH Classics competition 2018 – WA inaugural winner to Thabya Fathima Mohamed (Year 12) and runner up, Greta Blaxendale (Year 11) – offered to all Year 11 & 12 Ancient History students
- * Before school tutorials and revision classes after school
- * Revision seminars by the History Teachers' Association of Australia (HTAWA) – for both Modern and Ancient History
- * Roman advisory Group (RAG) seminars at the University of Western Australia – Y11 and 12 students
- * Australian History Challenge in Years 7 and 8

ECONOMICS

- * WA Treasury Inaugural Essay Competition – won by Thabya Fathima Mohamed (Year 12)
- * Chamber of Commerce and Industry excursions for top Y12 students
- * Steven Kemp visit – writer of their text book and chief marker of WACE exams
- * Revision seminars by the Economics Teachers' Association of Western Australia (ETAWA)
- * Before school tutorials
- * Murdoch Forecasting competition
- * Commonwealth Bank Financial Literacy talks

PSYCHOLOGY

- * Revision classes after school

POLITICS & LAW

- * Mock Trials Competition
- * Murdoch Street Law seminar incursion
- * PLEWA Seminars
- * Pinjarra Massacre Play at UWA for Academic Extension students

**GEOGRAPHY**

- * Australian Geography Competition
- * Geography Association of Western Australia (GAWA) revision seminars for Year 11/Year 12 Geography students



VALUE ADDING: OPPORTUNITIES FOR STUDENTS - MATHS

AUSTRALIAN MATHEMATICS COMPETITION

* Best in School Award Winner – Alessandra Berti Year 7

* Seven students were awarded a High Distinction

Year 7: Allesandra Berti, Euan McKay
 Year 8: Daniel Hipsey
 Year 9: Ariel Nelson
 Year 10: Aiden Figueiredo
 Year 11: Xuanqi Yu, Yujie Yang

* 66 students in Years 7-12 were awarded a Certificate of Distinction (top 20%)

Year 7: 10 distinctions
 Year 8: 18 Distinctions
 Year 9: 8 Distinctions
 Year 10: 16 Distinctions
 Year 11: 11 Distinctions
 Year 12: 3 Distinctions

**INTERNATIONAL COMPETITIONS & ASSESSMENT FOR SCHOOLS (ICAS)**

*33 students in Years 7-12 were awarded a Certificate of Distinction (top 10%)

Year 7 - 11 distinctions
 Year 8 - 6 distinctions
 Year 9 - 6 distinctions
 Year 10 - 4 distinctions
 Year 11 - 4 distinctions
 Year 12 - 2 distinctions

**AUSTRALASIAN PROBLEM SOLVING MATHEMATICS OLYMPIAD (APSMO) - GAT/AE YEARS 7 & 8**

Five problem solving sessions, of 30-minute duration, were conducted over Terms 2 & 3.

The main aims of the competitions were to:

- * Introduce students to important mathematical concepts
- * Teach major strategies and develop flexibility for problem solving
- * Foster creativity and ingenuity and strengthen intuition
- * Stimulate enthusiasm and enjoyment of mathematics
- * Provide for the satisfaction, joy and thrill of meeting challenges!

Top 10% Achiever Pins were awarded to four students

Top 25% Achiever Patches were awarded to 13 students

Special Achievement (Encouragement) Awards were presented to one student from each team

**IN ADDITION TO MATHS COMPETITIONS...**

- * Homework Maths club in Year 7 communities
- * Homework Maths club in Year 9
- * Year 12 Course overview sessions with Charlie Watson (CAS calculator expert), for students studying Year 12 Methods and Year 12 Specialist

VALUE ADDING: OPPORTUNITIES FOR STUDENTS - SCIENCE and The ARTS

SCIENCE

COMPETITIONS

- * Students participated in many science competitions, including the Brain Bee Challenge, Chemistry Quiz and Big Science competition, with some exemplary results
- * Came 8th in the world for the Education Perfect Global Science Challenge

SCIENCE WEEK

- * Celebrated Science Week, with a range of activities and competitions to promote science and STEM

NATIONAL YOUTH SCIENCE FORUM

- * School supported students to attend the National Youth Science Forum, with Michael Hatzon and Jasmine Hensley both being selected to travel to Brisbane and Canberra

CONOCO PHILLIPS SCIENCE EXPERIENCE

- * School supported Year 9 GAT students to attend the Conoco Philips Science Experience

LOCAL EXCURSION

- * Students participated in excursions to a national park and the Perth Zoo

SCIENCE CLUB

- * Students participate in after school STEM workshops, focusing on Robotics and science investigations

The ARTS

MUSIC CAMP

- * 2.5 day music camp - Year 7-10 music students

SVAPA Camp for Yr 7 and 8 students

EXCURSION

- * Perth International Arts Festival Program excursion SVAPA students

ANZAC CEREMONY

- * Music students performance at Kings Park

ARTS FESTIVAL

- * Whole school event including community partnerships

EARLY MORNING CLASSES for Years 7-9 SVAPA students.

WEEKEND WORKSHOPS for SVAPA students

SCHOOL PRODUCTIONS

- * Senior school drama and live production/ creative industries



VALUE ADDING: OPPORTUNITIES FOR STUDENTS

STUDENT ENGAGEMENT and WELL-BEING

An important measure of engagement and wellbeing is student attendance. Improving student attendance has been an important goal as students being in class matters. Students with unacceptable attendance are supported by Student Support Officers, Year Coordinators and Community Leaders as well as other Student Services Team members who can link with outside agencies to assist where necessary. The school has a well accepted uniform code that enjoys good support from parents. The school's behaviour code for students is likewise supported. The school's approach to dress and behaviour contribute to the positive learning environment. A variety of bullying prevention strategies are applied to ensure the school environment is safe for students. Bullying is not tolerated. A key performance indicator is that the school scores a minimum of 3.5 in that student component of the National School Opinion Survey. In 2018 this was exceeded (Students feel safe at school - 3.9) indicating students believe bullying is managed well within the school. Parents in the parent component of this survey recorded 4.1. The school promotes community service as a component of active leadership. The Colours Program, which has a service component, is well supported as are a range of community based programs, such as Bushranger Cadets through Cadets WA.

STUDENT SERVICES INITIATIVES**CADET CAMPS**

* 1 per term at various locations throughout the state, assisting the Department of Biodiversity, Conservation Attractions (BCA) and various activities

STUDENT LEADERS

* Thank you breakfast to acknowledge student leaders

YEAR 10 LEADERSHIP CAMP

* 3 day camp for 45 potential leaders to develop leadership skills

YEAR 12 HIGH ACHIEVERS' BREAKFASTS (3 PER YEAR)

* To acknowledge and encourage high achieving Year 12 students

YEAR 9 HIGH ACHIEVERS' BREAKFASTS (2 PER YEAR)

* To acknowledge and encourage high achieving Year 9 students

EX-PRISONERS OF WAR SERVICE

* An annual memorial service organised by, and conducted at MLSHS, involving choir, band, all councillors and prefects

VARIOUS EVENTS

* To celebrate/acknowledge various events/activities within the community. E.g. White Ribbon Day, No Bullying, Ride to School etc.

CAREER EXPO

* Reporting Day Term 1 - Representatives from TAFE, Training Organisations, Armed Forces and Universities.



VALUE ADDING: OPPORTUNITIES FOR STUDENTS - HEALTH and PHYSICAL EDUCATION (HPE)

INTERSCHOOL TEAMS/COMPETITIONS (Done in teacher's own time)

* Top 10 in the SSWA McMahon shield out of all the government school HPE departments in WA)

CAMPS/EXPEDITIONS

- * Sailing and power boating expeditions.
- * Rottnest snorkelling expedition.
- * Abseiling/Bushwalking expedition.

EXCURSIONS

- * John Forrest National Park walk
- * Mettams Pool snorkelling
- * Canoeing day trip
- * Interschool Athletics training day at State Athletics Centre
- * Golf classes at MLGC
- * Squash at Mirrabooka Squash World

**CARNIVALS**

- * Zone carnivals for each year: 100% participation, year group timetable suspended for the day and all students represent the school in a variety of sports around the North East Region
- * Certificate II Sport Coaching: students coach the younger teams under guidance and supervision of staff.

**HOUSE EVENTS**

- * Athletics and Swimming Carnivals - Whole school events: Used to select teams for Interschool Athletics and Swimming competitions.

PROFESSIONAL COACHING

- * Badminton
- * Touch (for ATAR PES students)
- * Squash
- * Golf

QUALIFICATIONS

- * Medic One First aid certificate in Cert II Sport Coaching



VALUE ADDING: OPPORTUNITIES FOR STUDENTS - LANGUAGES and INTEGRATED STUDIES

INCURSIONS

- * GAT Club - Guest speaker from the University of Western Australia
- * GAT Club – Guest Italian Chef
- * Languages Week – Yearly event
- * Languages Expo – Yearly event for students/school community/Primary Schools community
- * Languages Parent Support Group hosted a Master Class of Japanese cooking

EXCURSIONS

- * GAT Club visits: Mount Hawthorn PS, Confucius Society, Siena's Restaurant outing, Laguna Bocce Club
- * French Film outing, Chinese restaurant outing

STUDY TOURS

- * China tour 2018
- * Italy tour 2018

EXCHANGES

- * French Exchange to La Reunion, a French speaking island
- * Italian Intercultural Exchange – every year our students go to Italy in December/January and we host students from Italy in Terms 2 and 3
- * Japanese Exchange – students come from Japan every year
- * Chinese Exchange – students visiting from China

COMPETITIONS

- * OzCLO Linguistics Competition
- * Italian WAATI Examinations – State-Wide examinations for Senior School Italian students
- * Chinese – State-Wide speech competition
- * Chinese – State-Wide story telling competition
- * Chinese – State-Wide writing competition
- * French Alliance Francoise Examination for Senior students

**INTEGRATED STUDIES****STEM PROJECTS**

- * STEM project on robotics involved making robots and visit to Scitech
- * Careers Expo involved information stands runs by the students
- * STEM project on roller coasters

SOCIAL EVENTS

- * Medieval Arts day involved games, crafting artefacts and a long-sword demonstration.
- * In-school disco
- * River cruise
- * Adventure World

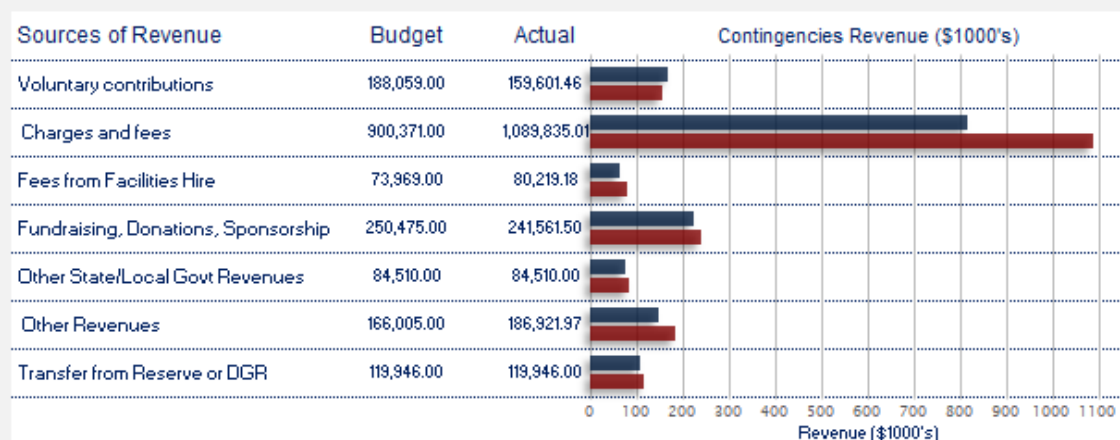
NATIONAL SCHOOL OPINION SURVEYS: Parents, Students and Teachers: 2018

All Western Australian schools are required to administer parent, student and staff National School Opinion Surveys. Mount Lawley Senior High School conducts the Parent, Student and Staff surveys annually.



The National Schools Opinion Survey seeks feedback from parents, students and teachers. These surveys provide an important source of information which assists the school in self-reflective and improvement planning processes.

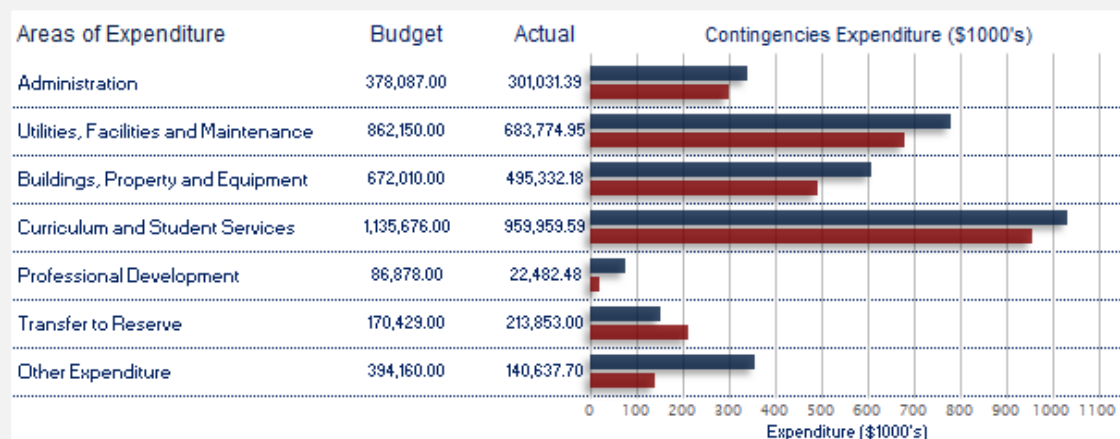
REVENUE: CASH (as at 31 December 2018)



Total - Locally Raised Funds	1,783,335.00	1,962,595.12
Opening Balance	1,066,141.00	1,066,141.00
Student centred Funding	849,914.00	879,002.17
Total Cash funds Available	3,699,390.00	3,907,738.48
Total Salary Allocation	16,635,110.00	16,635,110.00
Total Funds Available	20,334,500.00	20,542,848.48

Budget precision for projected income is, by nature, difficult to predict. Conservative budget projections are therefore customary. The higher than expected charges and fees collection rate, which exceeded the budget, was due to collections from previous years' outstanding charges

EXPENDITURE (as at 31 December 2018)



Total Goods and Services Expenditure	3,699,390.00	2,817,071.29
Total Forecast Salary Expenditure	15,920,516.00	15,920,516.00
Total Expenditure	19,619,906.00	18,737,587.29
Cash Budget Variance		

The expenditure for 2018 complied with the Department of Education's, "Minimum Expenditure Requirements".

KEY

Budgeted figures

Actual Figures

THE NINETIES CLUB



- Back Row (L to R) Samuel Marcus, Zitianyu (Tony) Wang, Max Bostock, Keith Mwathi, Soham Joshi, Callum Webster, Brooke Birch, Charlotte Mackiewicz.
- Second Row (L to R) Ava Breton, Katherine Esensoy, Mary Leong, Ivan Kalinkin, Connor O'Hara, Chelsea Kim, Megan Nguyen, Emily Mayhew, Tully Jones, Daisy Alps, Zoe Lim, Thomas Louth.
- Front Row (L to R) Fathima (Thabiya) Mohamed Faizan, Lauren McDonald, Eric Jong, Nik (Soraya) Suzaimi, Ekaterina Kalugina, Alana Sigismondi, Bojana Vlacic, Shadi Kolahdouzan, Nel Arseven, Alannah Horton, Isabel Mountain, Van Quynh (Valerie) Do,
- Absent: Dylan Cornford, Sessina Figueiredo, Nelson Ho, Oscar Kaspi-Crutchett, Jason Kim, Donia Lal, Chengxin (Rachel) Lu, Chanel Nguyen, Andrew Parry, Shannon Radcliffe, Walid Yaqub.

THE HONOURS SOCIETY 2018



- Back Row (L to R) Ivan Kalinkin, Megan Nguyen, Nik Soraya Suzaimi, Alannah Horton, Oscar Kaspi-Crutchett, Sessina Figueiredo, Nel Arseven, Donia Lal, Thomas Louth.
- Front Row (L to R) Katherine Esensoy, Fathima Mohamed Faizan, Brooke Birch, Ava Breton, Elisabeth Campbell, Shannon Radcliffe, Walid Yaqub,
- (Inset) Remy Wise-Petering.

ARTHUR LEGGETT, OAM, EM, WRITING PRIZE



Alannah Horton Year 12
Presented by Mr Peter Stokes
Sponsored by the Lodge of Sincerity,
Mount Hawthorn

DES BEARD MIDDLE SCHOOL CITIZENSHIP AWARD



Kate McCracken Year 9
Presented by Captain Ray Galliot, RFD,
Secretary & Treasurer,
Ex-Prisoner of War Association of WA

AUSTRALIAN DEFENCE FORCE LONG TAN LEADERSHIP AND TEAMWORK AWARD



Alix Forster Year 10
Davis Burke Year 12
Presented by Captain Ray Galliot, RFD, Secretary
& Treasurer, Ex-Prisoner of War Association of
WA

CHRISTINE RICHARDSON CITIZENSHIP AWARD



Alora O'Dwyer Year 12

EX-POW ASSOCIATION CADET OF THE YEAR



April Mobsby Year 10

MIDDLE SCHOOL DUX



Eloise Allen Year 9
Presented by Mr Simon Millman, MLA
Member for Mount Lawley

ANDREW DAVIS MEMORIAL AWARDS



Shaina Jones (Art) Year 12, Robert Vusak (Music) Year 12
Presented by Mr David and Mrs Helen Davis

John Andrew Davis started high school at Mount Lawley in 1976. He quickly became prominent in his two passions - Music and Art. In 1978, in a soccer training accident, his life was cut short at the age of 15 years and 2 months. This award presented since 1978, is to recognise students for their dedication to the areas of Music and Art.

MIDDLE SCHOOL SVAPA AWARD



Hannah Rivers Year 9

RALPH HONNER, DSO, MC AWARD FOR ENDEAVOUR



Ljiljana Podinic Year 12

THE ANITA CHONG (OAM) AND GEOFF DAVIS (AM) LANGUAGE AWARDS



Rianna Tilbrook Year 8
 Wesley Chong Year 7
 Hanna Wibbeke-Khoo Year 9
 Iman Achmed Year 10 (Inset)

Presented by Mr Wayne Houlton,
 Convenor, Languages
 Parent Support Committee

THE PRINCIPAL'S ART PRIZE - THE SAGITTE YOM-TOV PRIZE

YEAR 10 ASSOCIATE PRINCIPAL'S AWARD



Erynn Simcock Year 12
 Presented by
 Mr Zvi Yom-Tov and Dr Carmela Yom-Tov



Nathan Mayhew Year 10

PRINCIPAL'S GIFTED AND TALENTED (GAT) LANGUAGES AWARDS



Javier de Sousa Year 8, Tiffany Lee Year 8, Lucy Dye Year 10,
 Belinda Chen Year 7, Malin Beh Year 7, Junyuan (Andy) Ping Year 9,
 Harrison Huxham Year 9, Ella Dickie Year 10

Presented by Ms Rosanna Fanciulli, Convenor, GAT Committee

PETER SPARBIER PERPETUAL MATHEMATICS SCHOLARSHIP



Nathan Mayhew Year 10
Presented by Mr Rodney Cunningham

ALMA PORTER AWARD



Thereza Nadine Year 10

Presented by Mr Rod Willox, AM, RFD, ED, JP
Alma Porter was a School Officer at Mount Lawley from 1955 to 1988/9. She was Registrar and the only office lady at the school. The award provides a text book to a Year 10 student who is deserving due to their efforts and achievement and would benefit from the prize.

YEAR 10 SPECIALIST VISUAL AND PERFORMING ARTS AWARD



Sophie Flanigan Year 10

ROTARY STUDENT OF THE YEAR 2018



Phuong (Jenna) Thai Year 11
Presented by President Dene Irvin
Rotary Club of Mount Lawley
Donated by the Rotary Club of Mount Lawley

WALTER HOREB LITERARY AWARD



Marcus Lee (Prose) Year 11
Isabel Mountain (Poetry) Year 12 (Insert)

Presented by Mr Walter Horeb, former Head of Department, English Mount Lawley Senior High School

Walter Horeb was Head of Department of English for many years through the 1970s to 1990s and was editor of the school year book. The award, presented since 2000, is to encourage students to become involved in creative writing.

THE ROTARY CLUB OF MOUNT LAWLEY MUSIC SCHOLARSHIP 2018



Blake Faulkner Year 10

Presented by Mr Brian Copping
Sponsored by the Rotary Club of Mount Lawley

THE JADE WEI AWARD FOR INTERNATIONAL STUDENTS



Kei (Jacky) Li Year 11

Presented by Ms Jacqui Johnstone, Manager, Student Services and Compliance TAFE International Western Australia and Ms Carmen Borderick, General Manager, TIWA

