



MOUNT LAWLEY SENIOR HIGH SCHOOL

An Independent Public School

2017 Annual School Report



Olivia Trahair
Head Girl

Aaron Rossall-Rixon
Head Boy



WA Orchestra and Band Festival 2017

Shark Bay camp



Annual beach clean-up near Walpole



Maximising the enjoyment of learning and achievement for all students within a compassionate and democratic school culture and encouraging them to be responsible, creative and engaged lifelong learners.

CONTENTS

Our School and Community	Page 2
Business Plan Targets	Pages 3 - 4
Student Outcomes	Pages 5 - 15
Value Adding	Pages 16 - 19
National Opinion Surveys	Page 20
Financial Summary	Page 21
Student Awards	Pages 22 - 27



Year 12 Prefects

L to R: Jessica Emery, Bethany Taylor, Taonga Sendama, Gar-Hou Tran, Aaron Rossall-Rixon,
Emily Pietrocola, Olivia Trahair, Cody Crooks, Ruth Staer, Georgia Kuzmanovich, Henry
Barwick

OUR COMMUNITY

Mount Lawley is a residential suburb located 5km north of the Perth CBD. In the main it lies within the City of Stirling with the most southern component in the City of Vincent. It is situated adjacent to the Edith Cowan University, Mount Lawley Campus.

Mount Lawley Senior High School provides a comprehensive educational program for the suburb and surrounding areas including Inglewood, Mount Hawthorn, North Perth, East Perth, Yokine, Dianella, Maylands and Leederville. It is one of two Gifted & Talented Language schools in the State. Along with the Jazz Music and Special Visual and Performing Arts (SVAPA) programs, it attracts students from a wide range of suburbs to take advantage of the school's sound academic reputation. Over 1600 students were enrolled at the school during 2017.



PURPOSE STATEMENT

DEDICATED TO LEARNING: Mount Lawley Senior High School aims to maximise the enjoyment of learning and achievement for all students within a compassionate and democratic school culture, encouraging them to be responsible, creative and engaged lifelong learners. The school community encourages the development of the Guiding Principles of the Western Australian Curriculum & Assessment Outline.

THE OUTCOMES WE SEEK

The vision of the school, 'Inspire to Aspire', articulates the broad outcomes sought for students. These are directed towards participation in society in a responsible fashion, demonstrating respect and displaying a sense of pride. In 2016, in terms of learning outcomes for students the requirements of the syllabus statements of the 8 learning areas define what is delivered during classroom instruction.

PROGRAMS OFFERED

In Years 7-10 students complete a study program centred on the eight learning areas of the Western Australian Curriculum & Assessment Framework. All are compulsory. In English, Mathematics, Science and History, the Australian Curriculum is implemented.

In Years 11/12 students can select from a wide range of WACE courses. They may also choose to complete Workplace Learning and Certificates from the training curriculum. Parents have high expectations for their children and support the university, TAFE, traineeship and employment pathways that are available.

A Language program is available to students from Years 7-10 who gain entry through state-wide testing under the Gifted and Talented (GAT) program. In Years 7-10, the Specialist Visual And Performing Arts (SVAPA) and Jazz Music courses are also offered. A small number of Aboriginal students are involved in the Aboriginal Excellence Program.

School staff implement rigorous programs that are designed to extend students and prepare them for their future. Students at-risk are catered for with a range of extension, pastoral and literacy and numeracy initiatives. Special needs students are supported with relevant programs and individual assistance. Students at Mount Lawley Senior High School are also supported by a dedicated Student Services team. They also enjoy the benefits of the P & C funded Homework Centre (Achievement Club).

A CadetsWA Bush Ranger unit is also available and provides opportunities for students to enhance team skills, leadership qualities and personal attributes.



SCHOOL BUSINESS PLAN TARGETS 2015 - 2017

The School Business Plan is underpinned by the Department of Education's Strategic Plan, the annual "Focus" documents and the Director General's Strategic Plan for WA Public Schools. The School Business Plan prioritises the work of the school over the period of the plan.

Four priority areas highlight the work of the school and outline specific targets for achievement over the three years of the plan. The progress over three years on these targets is summarised below.

PRIORITY AREA 1 - ACADEMIC ACHIEVEMENT

Priority Area 1 Targets	2015	2016	2017	Target Achievement	Target met?
1.1 Achieve an attainment rate above the state average	✓	✓	✓	<i>The attainment rate was above the state average for each year of the Business plan.</i>	✓
1.2 Match or better like schools SAIS results in Year 12 in at least 10 subjects	✗	✗	✗	<i>Better in 8 subjects in 2015, 7 in 2016 and 4 in 2017.</i>	✗
1.3 Top 50 school in at least 2 "League table" measures over the triennium	✓	✓	✗	<i>5 "League Table" measures were achieved over the triennium. (3 tables in 2015, 2 tables in 2016)</i>	✓
1.4 Median ATAR of 80 achieved by 2017	✗ 79.95%	✓	✓	<i>Median ATAR exceeded 80 in 2016 (81.75%) and 2017 (80.95%). NB TISC Result used in 2017</i>	✓
1.5 Year 7 and Year 9 mean scores in all tested domains are 3% or more above national mean scores	✓	✓	✓	<i>National mean scores for NAPLAN in all tested domains in Year 7 and Year 9 were exceeded by more than 3%.</i>	✓

PRIORITY AREA 2 - CLASSROOM PRACTICE

Priority Area 2 Targets	2015	2016	2017	Target Achievement	Target met?
2.1 Professional Learning Communities (PLC) operate in all learning teams and at least 20 minutes per meeting is devoted to professional conversations	✓	✓	✓	<i>All curriculum leaders reported PLC operating and met for the required minimum of 20 minutes.</i>	✓
2.2 All teachers through their performance management agreement identify at least one aspect of the School Pedagogical framework to improve their performance	✓	✓	✓	<i>School Pedagogical framework is now operationalised. All teachers used one aspect of the framework for a goal in performance management agreements.</i>	✓
2.3 All teachers engage in peer observations part of their performance management arrangements.	✓	✓	✓	<i>All teachers at the school were engaged in peer observation teams for two of the three years of the Business Plan.</i>	✓

PRIORITY AREA 3 - STUDENT ENCOURAGEMENT and WELL-BEING

Priority Area 3 Targets	2015	2016	2017	Target Achievement	Target met?
3.1 The school attendance rate exceeds 90%	✓	✓	✓	<i>The attendance rate of 90 % was exceeded in each year of the Business Plan.</i>	✓
3.2 Attendance rates exceed 90% in all year groups.	✓	✓	✓	<i>The attendance rate of 90 % was exceeded in each year level in year of the Business Plan.</i>	✓
3.3 Each year at least twenty students will gain "colours" which recognises individual commitment, engagement and achievement.	✓	✓	✓	<i>In each year of the Business Plan more than 20 students achieved "colours". A total of 108 students achieved "colours" across the three years of the Business Plan.</i>	✓
3.4 The school scores a minimum of 3.5 on student safety in the National School Opinion Survey.	✓	✓	✓	<i>A minimum score of 3.5 for student safety was exceeded in each year of the Business Plan.</i>	✓
3.5 20% of the graduating class achieve 20 hours of community service.	✗	✗	✗	<i>The highest percentage achieved for any one year was 17%.(We encourage community service as it is now not compulsory).</i>	✗

PRIORITY AREA 4 - PARTNERSHIPS

Priority Area 4 Targets	2015	2016	2017	Target Achievement	Target met?
4.1 Maintain an Alumni registry in order to identify potential partners.	✓	✓	✓	<i>Alumni registry established and maintenance/updates are on-going.</i>	✓
4.2 All student requests for work placement are met by sufficient employer involvement.	✓	✓	✓	<i>All students requesting placements have been placed in every year of the Business Plan.</i>	✓
4.3 Maintain relationships with at least six external partners.	✓	✓	✓	<i>Multiple partners, exceeding six in each year of the Business Plan.</i>	✓
4.4 The school board will engage with other school boards	✓	✓	✓	<i>Board engagement with other schools is developing</i>	✓

LEGEND



Target Achieved



Target Partially Achieved

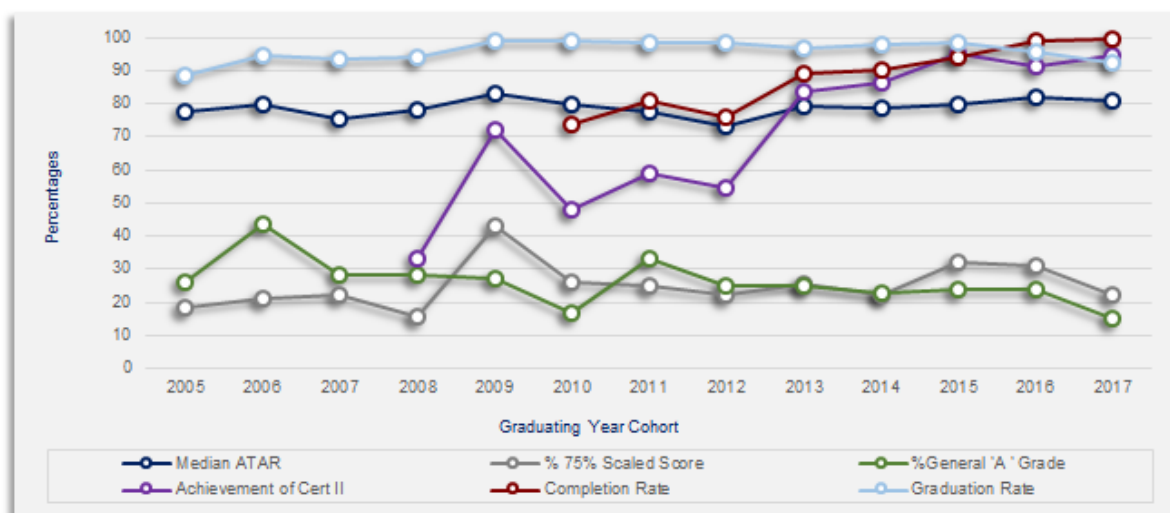


Target Not Achieved

YEAR 12 PERFORMANCE

The graph (below) shows a series of performance measures over time. Key points are outlined below:

- * The Median ATAR for 2017 (80.95), whilst lower than the 2016 result is higher than the state median (77.46).
- * The achievement of Certificate 11 or higher (94.71) is the second highest result since 2008. The highest being 95%.
- * The Completion rate (99.6) is the highest achieved since 2010.



The following table further summarises the school's performance and, where possible, this is compared to State results. For some measures the State outcomes were not provided or could not be calculated.

FACTOR	SCHOOL (%)	STATE (%)
WACE Achievement	92.5	90.06
Students with a score of at least 75% in a WACE course	22	*NR
WACE students in the top third of the state	29	33.33
Offered first preference in a tertiary Institution	57.43	68.35
Offered placement in a Tertiary Institution	83.78	92.7
Median score for WACE students	80.95	77.46
Students gaining an "A" grade in a stage 1 course	14.9	11.5
Students participating in VET *	86	*NR
Students achieving AQF Certificate 11 or higher *	94.71	*NR
Number of VET Qualifications Completed *	265	*NR
Offered first preference in a TAFE	Figures not available at time of publication	
Offered placement in a TAFE	Figures not available at time of publication	
Completion rate (55 ATAR or Certificate 11)	97	96

*NR - Not recorded in 2017 statistics

*NR Some students achieved more than 1 VET qualification

YEAR 12 PERFORMANCE

School highlights include:

* Top 10% subject achievement: Computer Science, Psychology

* 45 students achieved an ATAR of 90 or higher.

* 3 students achieved an ATAR of 99 or higher (students in the top 1% of the state)



Zachary Dempsey (ATAR Dux)



Anyang Zhao



Minh Giao Chu

* 2 students gained an ATAR Subject Certificate of Excellence (students in the top 0.5% of the state)



Anishka Brown
Economics



Taonga Sendama
English

* 12 students received Certificates of Distinction Awards for consistent school achievement (students who obtain at least 190 - 200 points in their last three consecutive years of senior secondary WACE enrolment)

Allysa Alea, Anishka Brown, Zac Dempsey, Jessica Emery, Reese Horton, Phoebe Hu-Collins, Mohamed Imran, Annalise Kop, Jeremy Lee, Ryan Makin, Liam Niedzielski, Jia Zhu

* 37 students received Certificates of Merit for consistent school achievement (students who obtain at least 150 - 189 points in their last three consecutive years of secondary WACE enrolment)

Benjamin Baronowitz, Madison Birch, Ethan Chia, Celeste Colgan, Ava Diepveen, Fiona Drew, Michael Duong, Rachael Fiorentino, Tahlia Glasson, Finn Hazewinkel, Leah Heath, Julian Heng, Stephanie Hood, Rhianna Howells, Phoebe Kleppe, Stephanie Kop, Georgia Kuzmanovich, Abi Lilford, Rosemary Maley, Liam McKenzie, Connor Monaghan, Julie Nguyen, Ava Nikpour, Madison Nixon, Isabelle Nunn, Josephine Offer, Emily Pietrocola, Abbey Prentice, Morgan Rokich, Natasha Shelley, Teagan Shelley, Bethany Taylor, Rachael Tipping, Olivia Trahair, Gar-Hou Tran, Analissa Yang. There was one other student - not for publication.

YEAR 12 STUDENT PERFORMANCE - ATAR COURSES

The table (below) shows the performance of subjects, comparing Mount Lawley Senior High School to similar schools in Western Australia.

Course	Performance		
	2015	2016	2017
Accounting and Finance		2	3
Applied Information Technologies	2		
Biological Sciences	2		
Biology		3	2
Chemistry	2	2	2
Drama	2	2	2
Economics	1	2	2
English	2	2	2
English as an Additional Language / Dialect	2	2	2
Geography	2	2	2
Human Biological Science	2		
Human Biology		2	3
Literature	2	2	2
Mathematics	2		
Mathematics Applications		2	2
Mathematics Methods		2	2
Mathematics Specialist	2	2	2
Media Production and Analysis	2	2	2
Modern History	2	2	2
Music	2	3	
Physical Education Studies	2	2	2
Physics	3	2	2
Politics and Law	2	2	3
Psychology	2	2	2
Visual Arts	2	2	2

In 2017, all subjects areas (except three) are identified with "yellow boxes". This means these subject areas performed as expected when compared to like schools. Historically, most subject areas have performed within the expected range.

Two subjects, Accounting & Finance and Politics and Law, are shown here with a, "Performance below than expected (like schools)".

All subject areas have undergone an extensive review process which focuses on areas of strength and specific areas where student performance was not as expected. Improvement plans have been developed in each subject area to ensure all subjects perform as expected, or better than expected.

LEGEND

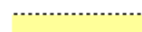
Performance better than expected (like schools)



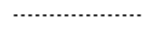
Performance below than expected (like schools)



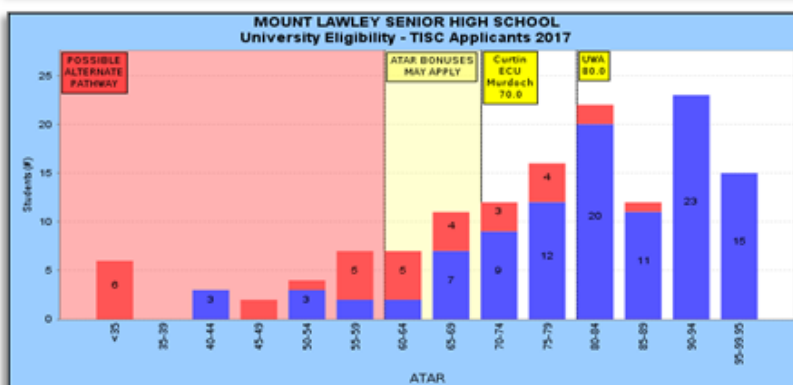
Performance as expected (like schools)



No data available or less than 10 students in course



YEAR 12 PERFORMANCE - UNIVERSITY ELIGIBILITY



The table (at left) outlines the percentage of students within a series of ATAR bands. These bands are then ordered in terms of scores for entry to the four public universities in Perth.

The red "caps" at the top of various columns show the number of students who did not meet the English subject score of the entry requirement. These students are eligible for an alternate entry to university.

Students with an ATAR below 70 do not meet university eligibility requirements, however, students with an ATAR score between 55 and 70 are eligible for entry via alternative pathways.

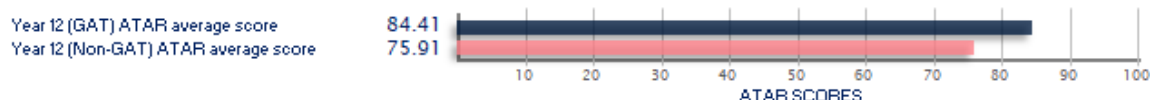
This table further outlines a comparatively large examination cohort at the school which includes students who may not have maximized their post-school opportunities.

Staff consider this information when counselling students and parents in the most appropriate course selection pathway. VET and training based options are valid, relevant and reasonable.

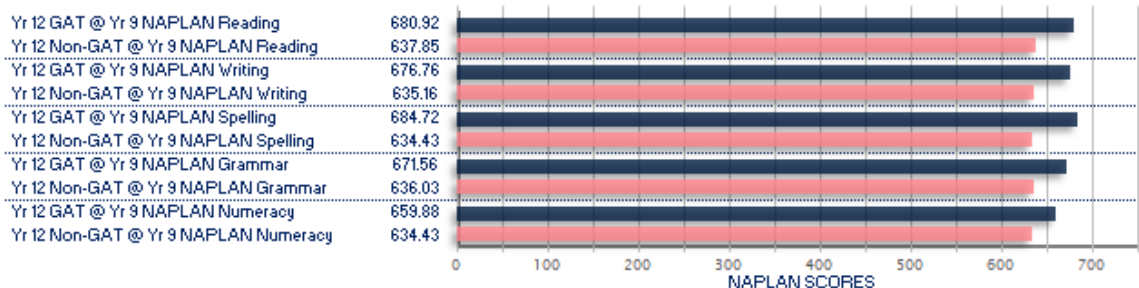
GIFTED and TALENTED - LANGUAGES

Year of schooling (2017 graduating cohort)	2017 Year 12	2016 Year 11	2015 Year 10	2014 Year 9	2013 Year 8	2012 Year 7
Number of GAT students studying ISL,CSL	11	13	25	25	24	NA

Graph showing the average ATAR scores of GAT students vs non_GAT students (2017 graduating cohort)



Graph showing the average Yr 9 NAPLAN scores of GAT students vs non-GAT students (2017 graduating cohort)



Aggregated comparative score: Yr 12 ATAR & Yr9 NAPLAN - GAT vs non-GAT students (2017 graduating cohort)



Year 10 school allocated scores for GAT vs non-GAT students (2017 graduating cohort @ Yr 10 in 2015)



Year 10 school allocated scores for GAT vs non-GAT students (2019 graduating cohort)



Year 9 school allocated scores for GAT vs non-GAT students (2020 graduating cohort)



Year 8 school allocated scores for GAT vs non-GAT students (2021 graduating cohort)



Year 7 school allocated scores for GAT vs non-GAT students (2022 graduating cohort)

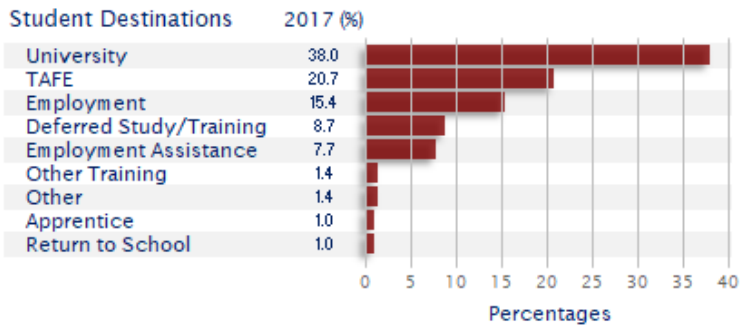


NER: The heatmaps (above) show the non_GAT students at position 0 & GAT student performance is indicated by the "dot".

© Copyright OCCDATA 2017

As the graphics show, the GAT group achieve in excess of the mainstream group, which is to be expected. GAT parents can have a sense of confidence that their son or daughter is being given opportunities to be enriched and extended across the curriculum at Mount Lawley SHS.

YEAR 12 DESTINATIONS (2017)



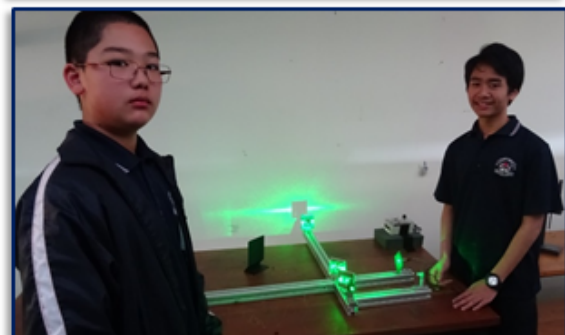
The data outlining the 2017 Year 12 post school transitions (as shown in the graph at left) is provided in the Department of Education's destinations report for Year 12 students.

Mount Lawley Senior High School provides extensive student counselling for post school options.

YEAR 12 (2017) UNIVERSITY COURSE OFFERINGS - Enrolments/deferrals

84% of Mount Lawley Senior High School WACE students were offered a place in a public university with 57% gaining their first choice. The courses offered from Curtin University, Edith Cowan University, Murdoch University and the University of Western Australia included:

- Agriculture
- Architecture
- Biological Sciences
- Business and Management
- Chiropractic and Osteopathy
- Communication and Media Studies
- Computer Engineering
- Computer Science
- Creative Arts
- Criminology
- Engineering and Related Technologies
- Environmental Engineering
- General Nursing
- Human Movement
- Interior and Environmental Design
- Law
- Learning Skills Programmes
- Management and Commerce
- Marketing
- Medical Studies
- Mining Engineering
- Natural and Physical Sciences
- Networks and Communications
- Occupational Therapy
- Pharmacy
- Physics
- Psychology
- Security Services
- Social Work
- Society and Culture
- Speech Pathology
- Structural Engineering
- Studies in Human Society
- Surveying
- Teacher Education: Early Childhood
- Teacher Education: Primary
- Teacher Education: Secondary
- Urban Design and Regional Planning
- Veterinary Science
- Visual Arts and Craft



VOCATIONAL EDUCATION and TRAINING STUDIES – YEAR 11 and 12 COURSES

Qualification Name	Certificate			Fully Enrolled	Achieve d Quals	Trainee- ships	VET students
	II	III	IV				
Certificate II in Applied Language	34			32	15		34
Certificate II in Building and Construction (Pathway - Trades)	7			7	2		7
Certificate II in Plumbing	1			1	1		1
Certificate II in Building and Construction (Pathway - Trades)	5			5	2		5
Certificate II in Bicycle Mechanical Technology	7			5	5		7
Certificate II in Automotive Servicing Technology	1			1	1		1
Certificate II in Automotive Body Repair Technology	1			1	1		1
Certificate II in Business	88			79	75		88
Certificate III in Business		1					1
Certificate IV in Business			3	2			3
Certificate II in Community Services	15			14	14		15
Certificate II in Creative Industries	38			36	15		38
Certificate II in Visual Arts	111			92	41		111
Certificate III in Music Industry		6		6			6
Certificate III in Visual Arts		4		2	2		4
Certificate III in Health Services Assistance		1		1	1		1
Certificate II in Information, Digital Media and Technology	35			34			35
Certificate II in Engineering	1			1	1		1
Certificate II in Engineering Pathways	36			31	14		36
Certificate III in Engineering - Technical		2		1	1		2
Certificate II in Government	1			1		1	1
Certificate II in Hairdressing	1			1	1		1
Certificate II in Retail Services	1			1		1	1
Certificate II in Sport and Recreation	1			1		1	1
Certificate II in Sport Coaching	83			78	36		83
Certificate II in Hospitality	83			75	37		83
Certificate II in Electro technology (Career Start)	2			2			2

Our Vocational Education and Training program (VET) enhances the students' learning by offering an industry recognised qualification and increasing their employability skills. In 2017 we partnered with four Registered Training Organisations (RTO's), to offer eleven qualifications under an auspicing arrangement. These qualifications were delivered by our teachers to the VET students at school. The qualifications were delivered either at a Certificate II or a Certificate III level under the Australian Qualifications Framework (AQF).

Students commence their qualifications in Year 11 and generally complete them in Year 12. In 2017, a large number of Year 11 Certificate II in Business students completed their qualification and will be articulating to the Certificate III in Business in Year 12.

All of our VET teachers hold the Certificate IV in Training and Assessment and have maintained their industry currency. A large number also hold the qualification that they are delivering to the students.

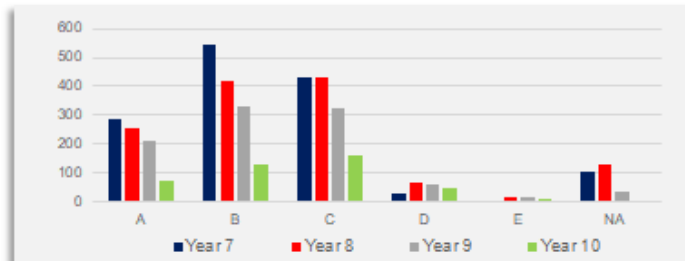
The students in our Career Link Program attend school three days per week and on the other two days attend an external training program and work experience. The programs are delivered by a variety of RTO's including North Metropolitan and South Metropolitan TAFE's and private RTO's. The courses that these students attend are generally not available at school and include Pre-apprenticeship and School Based Traineeship programs. Students who complete their VET programs can use their qualification to gain part-time and in some cases full-time employment as well as enrol in higher level qualifications at TAFE.

The higher level qualifications can lead to employment and can also be used as a pathway to university. In 2017 86% of our students in Years 11 and 12 undertook a VET qualification. This is a positive increase from 2016 where 77% of this cohort undertook a VET qualification.

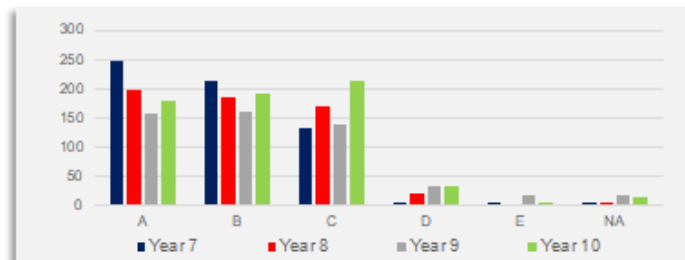


YEAR 7 - 10 GRADE ALLOCATIONS

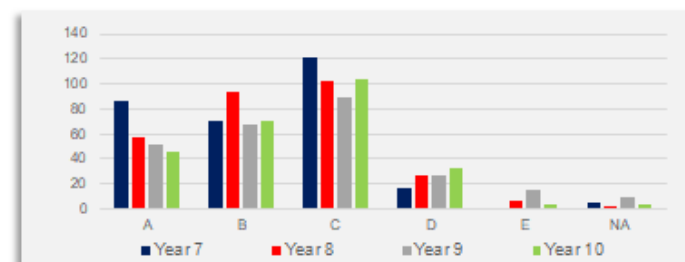
The ARTS						
Year Level	A	B	C	D	E	NA
Year 7	287	545	433	29	6	102
Year 8	254	418	432	66	14	132
Year 9	214	331	323	60	15	33
Year 10	71	128	160	47	10	6



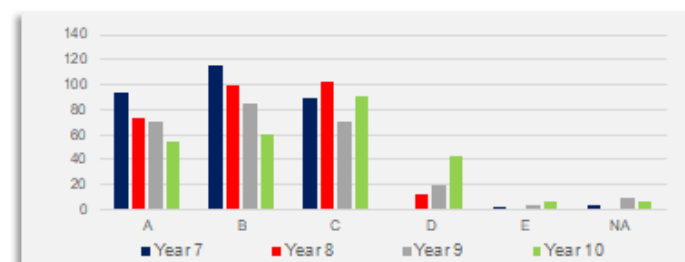
HEALTH and PHYSICAL EDUCATION						
Year Level	A	B	C	D	E	NA
Year 7	248	214	133	2	2	5
Year 8	198	185	169	21	0	3
Year 9	156	161	139	33	18	17
Year 10	180	191	214	33	5	15



MATHEMATICS						
Year Level	A	B	C	D	E	NA
Year 7	87	71	122	17	0	5
Year 8	58	93	102	27	6	2
Year 9	52	67	90	27	15	10
Year 10	46	70	104	32	4	4



HUMANITIES and SOCIAL SCIENCES						
Year Level	A	B	C	D	E	NA
Year 7	93	115	89	0	2	3
Year 8	73	100	103	12	0	0
Year 9	71	85	71	20	4	10
Year 10	54	60	91	43	6	6



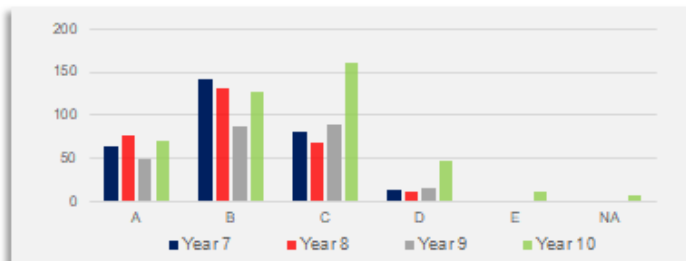
In WA public schools, student achievement is reported to parents as a "letter grade". The letter grades range from 'A' to 'E'. Where a student has not completed a course to a sufficient standard a "No Award" (NA) may be indicated.

Grades are determined by moderated, teacher professional judgements. Teachers use systemic work samples to assist in these judgements. The graphs (above and on the following page) show the 2017 grading record for students in Years 7-10.

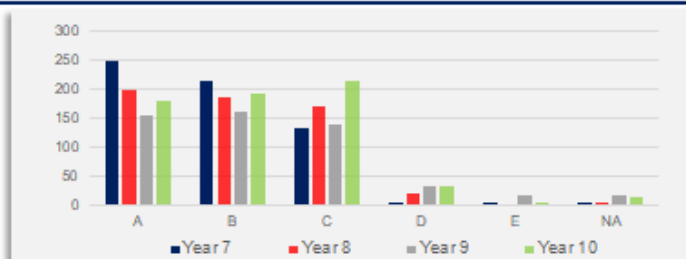
The Arts, Technologies and HPE learning areas have more grades awarded than enrolments but this is due to students completing more than one course. In Mathematics, English, Science and HASS (MESH) and Languages grading approximates enrolment.

YEAR 7 - 10 GRADE ALLOCATIONS

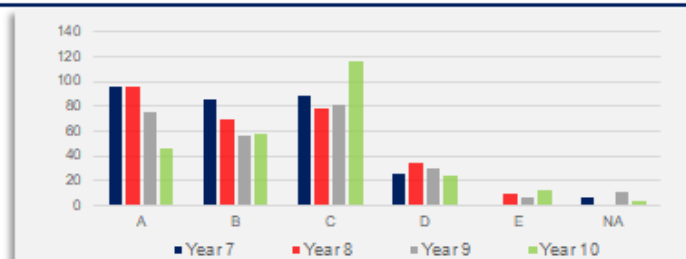
ENGLISH						
Year Level	A	B	C	D	E	NA
Year 7	63	142	81	12	1	3
Year 8	76	131	67	11	1	2
Year 9	50	86	89	16	7	12
Year 10	37	85	112	20	3	3



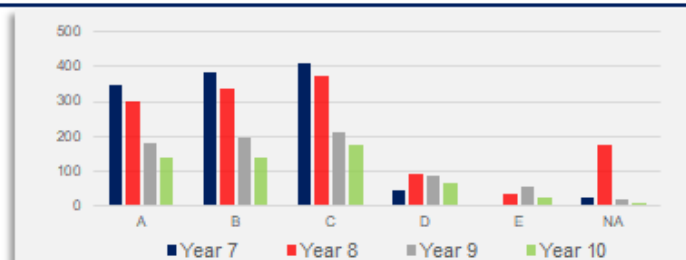
LANGUAGES						
Year Level	A	B	C	D	E	NA
Year 7	248	214	133	2	2	5
Year 8	198	185	169	21	0	3
Year 9	156	161	139	33	18	17
Year 10	180	191	214	33	5	15



SCIENCE						
Year Level	A	B	C	D	E	NA
Year 7	96	85	89	25	0	7
Year 8	96	70	78	35	9	0
Year 9	76	56	81	30	7	11
Year 10	46	58	116	24	12	4

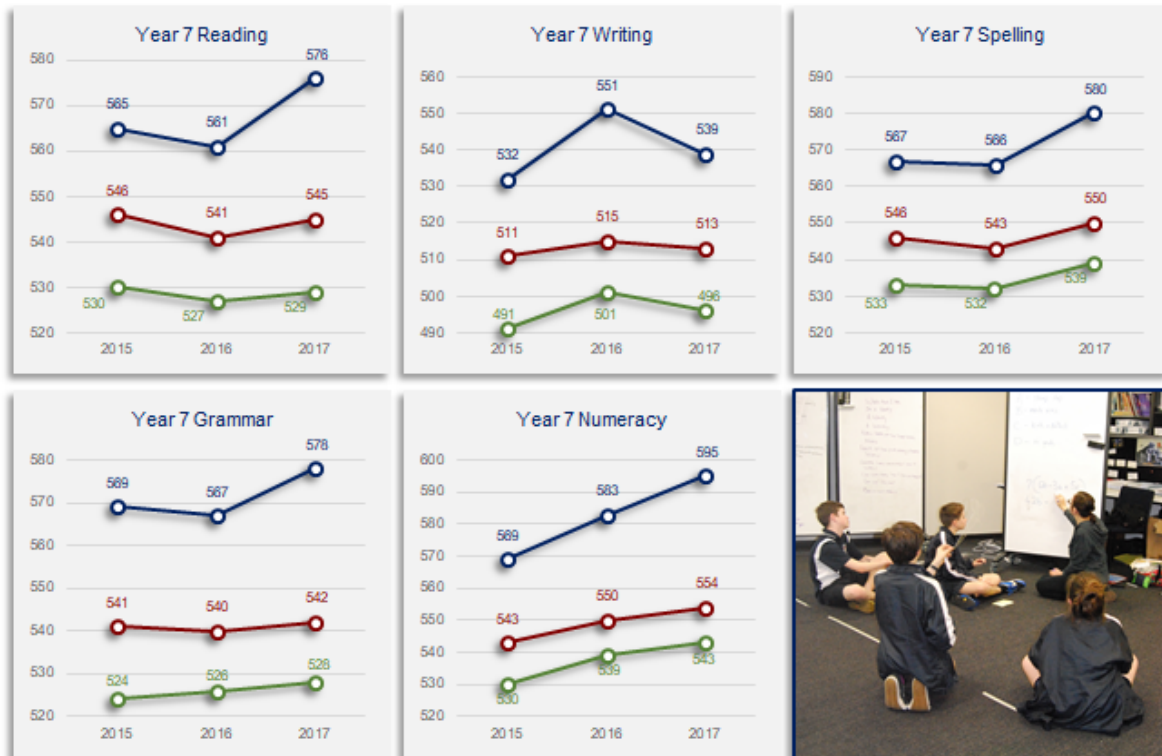


TECHNOLOGIES						
Year Level	A	B	C	D	E	NA
Year 7	348	386	408	45	2	26
Year 8	298	338	374	94	32	173
Year 9	178	195	212	87	54	16
Year 10	139	139	177	65	23	6



YEAR 7 NAPLAN 2017 - Mean comparisons: National, State, Mount Lawley SHS

The National Assessment Program: Literacy and Numeracy (NAPLAN) is conducted in all Australian schools in May of each year. Tests are conducted in Years 3,5,7& 9. National, State and MLSHS scores for 2015-2017 are displayed.



KEY	Mount Lawley SHS	National Mean Scores	State Mean Scores
-----	------------------	----------------------	-------------------

The Year 7 Mount Lawley SHS mean scores exceeded National and State mean scores in each of the NAPLAN domains. Reading, Spelling Grammar and Numeracy exceed 2016 scores. Numeracy has increased by 30 in 3 years.

The Year 7 NAPLAN target as outlined in the school's 2015-2017 Business Plan was set by the School Board for the mean scores to be 3% or more above national mean scores. It was achieved in 2017 and for each year of the 2015-2017 Business Plan. This target has been retained in the 2018-2020 business plan.



YEAR 7 NAPLAN STANDARDS - 2017 (NB: Due to rounding, some totals may not equal 100%)

NAPLAN Test	Numeracy (%)		Reading (%)		Writing (%)		Spelling (%)		Grammar (%)	
	MLSHS	WA	MLSHS	WA	MLSHS	WA	MLSHS	WA	MLSHS	WA
Mount Lawley/WA Public Schools										
Above National Minimum Standard	96	80	96	76	83	61	93	79	92	75
AT National Minimum Standard	3	16	4	15	15	25	6	13	4	13
Below National Minimum Standard	0	5	0	9	2	14	1	8	4	12

YEAR 9 NAPLAN 2017 - Mean comparisons: National, State, Mount Lawley SHS

The National Assessment Program: Literacy and Numeracy (NAPLAN) is conducted in all Australian schools in May of each year. Tests are conducted in Years 3,5,7& 9. National, State and MLSHS scores for 2015-2017 are displayed.



KEY	Mount Lawley SHS	National Mean Scores	State Mean Scores
-----	------------------	----------------------	-------------------

Whilst the 2017 scores are lower in all test areas (except Maths), the Year 9 Mount Lawley SHS mean scores exceeded National and State mean scores in each of the NAPLAN domains.

The Year 9 NAPLAN target as outlined in the school's 2015-2017 Business Plan was set by the School Board for the mean scores to be 3% or more above national mean scores. It was achieved in 2017 and for each year of the 2015-2017 Business Plan. This target has been retained in the 2018-2020 business plan.



YEAR 9 NAPLAN STANDARDS (2015 - 2017)

NAPLAN Test	Numeracy (%)		Reading (%)		Writing (%)		Spelling (%)		Grammar (%)	
	MLSHS	WA	MLSHS	WA	MLSHS	WA	MLSHS	WA	MLSHS	WA
Mount Lawley/WA Public Schools										
Above National Minimum Standard	96	79	96	72	83	59	93	75	93	68
AT National Minimum Standard	3	20	4	19	15	20	6	16	6	19
Below National Minimum Standard	0	2	0	9	2	21	1	9	1	13

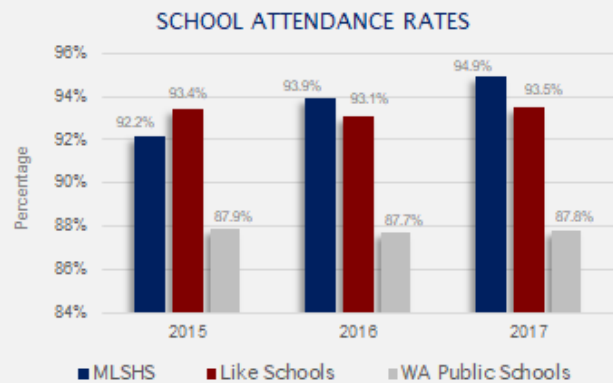
SCHOOL ATTENDANCE RATES

YEAR	Non-Aboriginal Attendance			Aboriginal Attendance			Total Attendance		
	MLSHS	Like	State	MLSHS	Like	State	MLSHS	Like	State
2014	90.0	92.1	88.6	82.1	80.3	66.3	89.8	92.0	86.9
2015	92.5	93.5	89.7	82.2	82.8	68.0	92.2	93.4	87.9
2016	94.0	93.2	89.5	86.6	83.0	67.4	93.9	93.1	87.7
2017	94.9	93.6	89.7	91.9	83.7	66.6	94.9	93.5	87.8

In 2017 the attendance rate for Mount Lawley Senior High School exceeded all comparative categories:

- * Aboriginal
- * Like Schools
- * WA Public Schools

This was first achieved in 2016. The overall attendance rate at Mount Lawley SHS has increased by 5.1% since 2014. This compares very favourably with Like Schools(1.5%) and WA Public Schools (0.9%).



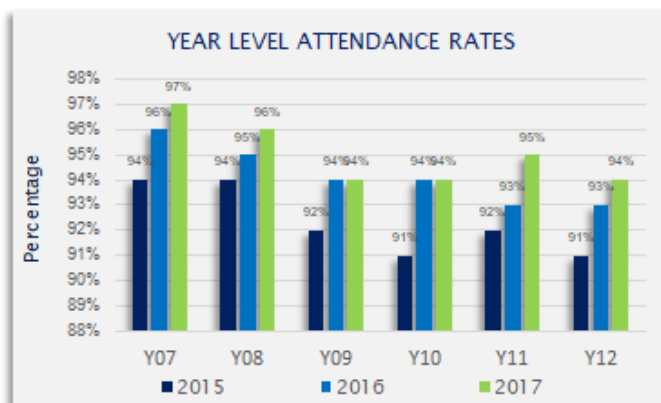
YEAR LEVEL ATTENDANCE RATES

An attendance rate of 90% is considered essential for students to maximise their learning opportunities provided at school.

Year Level	Yr 7	Yr 8	Yr 9	Yr 10	Yr 11	Yr 12
2015	94	94	92	91	92	91
2016	96	95	94	94	93	93
2017	97	96	94	94	95	94
WA 2017	91	89	87	85	87	88

A target rate of 90% was set by the school board in the 2015-2017 Business Plan. The target was achieved in the first year of the Business Plan and this level has been maintained since then. (Before 2015 the attendance rate in Years 9, 10 and 11 was lower than 90%.)

The Business Plan 2018-2020 retains the attendance target as a measure of success. The Target attendance rate has been increased to 92%.



STUDENT ENROLMENTS 2013 - 2017

Semester 2	2013	2014	2015	2016	2017
Lower Secondary	811	767	1013	1041	1113
Upper Secondary	505	500	533	515	517
Total	1316	1267	1546	1556	1630

Total enrolments have increased steadily since 2015. This was when Year 7 students transitioned into WA Public Secondary Schools.

Enrolments are high and, historically, large numbers of students seek enrolment from outside the gazetted "zone" for Mount Lawley SHS.

Enrolment projections, partially influenced by an expanding inner city demographic, have highlighted the need for a new inner city school which is expected to open in 2019. The "Inner City Secondary School" (planning name only) is, initially, expected to reduce enrolment pressure on Mount Lawley SHS.

VALUE ADDING: OPPORTUNITIES FOR STUDENTS

The school's commitment to student engagement involves an "all encompassing" view of student life which includes, and extends, far beyond a singular focus on academic achievement. Their interests and talents are nurtured across all areas of the school via an extensive range of academic, cultural, sporting and community engagement experiences which are designed to challenge and enrich the life of students. Some of the 2017 highlights are outlined below:

STUDENT SERVICES

Cadet Camps

1 per term at various locations throughout the state, assisting the Department of Biodiversity, Conservation and Attractions (BCA) and various activities.

Student Leaders

Thank you breakfast to acknowledge student leaders and their efforts during the year.

Year 10 Leadership Camp

3 day camp for 51 potential leaders to develop their leadership skills.

Year 12 High Achievers' breakfasts

To acknowledge and encourage high achieving Year 12 student from all pathways.

Year 9 High Achievers' breakfasts

To acknowledge and encourage high achieving Year 9 students.

Ex-POW Service

An annual memorial service organised by, and conducted at MLSHS, involving choir, band, all councillors and prefects.

Various events

To celebrate/acknowledge various events/activities within the community. E.g. White Ribbon Day, No Bullying, Ride to School etc.

Career Expo

Reporting Day Term 1 - Representatives from TAFE, Training Organisations, Armed Forces and Universities.



ENGLISH

Poetry in action

Poetry performance and workshop.

Debating

Western Australian Debating League (17 teams Years 7 - 12)

Public Speaking

Rotary Four Way Test Public Speaking Competition.

Curtin Excursion

ATAR English and Literature Conference.

Competitions

ICAS English test.
Donate Life Micro Fiction Competitions.
Dorothea Mackellar Poetry Competition.



VALUE ADDING: OPPORTUNITIES FOR STUDENTS

HUMANITIES and SOCIAL SCIENCES

Excursions

- * Pompey @ Fremantle Museum - GAT, Academic Extension, Ancient History students
- * Geography (Swan Valley) - Year 11 students
- * Geography (City) - Year 12 students
- * Geography (Ellenbrook) - Year 12 students
- * 4 x "RAG" lectures @ UWA - Year 12 Ancient History students
- * Modern History and Ancient History Seminar @ MLC - Year 12 students

Incursions

- * Commonwealth Bank talks to year 10 students
- * Economics talk (Economics PhD) - Year 12 students
- * Economics and Markets talk (Tony Galatti) - Year 7 and 8 HASS students

Competitions

- * Simpson essay - Year 9 and 10 students
- * Premier's ANZAC essay - Year 9 students
- * Australian Stock Exchange - Year 10 Academic Extension students
- * 2 x Mock trial teams (reaching finals)



LANGUAGES

Incursions

- * GAT Club - Guest speaker from UWA.
- * GAT Club - Guest Italian Chef.
- * Languages Week - Yearly event.
- * Languages Expo - Yearly event for students/school community/Primary Schools community.
- * Languages Parent Support Group hosted a Master Class of Japanese cooking with ex Nobu chef David Jung.

Excursions

- * GAT Club visits: Mount Hawthorn PS, Confucius Society, Siena's Restaurant outing, Laguna Bocce Club, French Film outing to Cinema Paradise

Study Tours

- * Japan tour - January 2017.
- * China tour - two students to China with the Australia/China Friendship Society

Exchanges

- * French Exchange to La Reunion, a French speaking island.
- * Italian Intercultural Exchange - every year our students go to Italy in December/January and we host students from Italy in Terms 2 and 3.
- * Japanese Exchange - students come from Japan every year in March and August.
- * Chinese Exchange - students came from Sister School in China.

Competitions

- * OzCLO Linguistics Competition.
- * Italian WAAATI Examinations - State-Wide examinations for Senior School Italian students.
- * Italian Dante Alighieri - State-Wide speech competition for Years 7, 8 and 9.
- * Japanese - State-Wide speech competition.
- * Chinese - State-Wide speech competition.
- * Chinese - State-Wide story telling competition.
- * Chinese - State-Wide writing competition.
- * French Alliance Francoise Examination for Senior students.



VALUE ADDING: OPPORTUNITIES FOR STUDENTS

Australian
Mathematics
Competition

Best in School Award Winner – Samuel Blizzard
Three students in the school were awarded a High Distinction.
Year 9 – Samuel Blizzard (top 3%)
Year 11 – Thomas Louth (top 5%)
Year 12 – Anyang Zhao (top 5%)

Another 48 students in Years 7-10 were awarded a Distinction certificate for being in the top 20% and 4 students in Years 11 and 12 were also awarded a Distinction certificate for being in the top 25% of candidates.

**ICAS
Mathematics

Two students in the school were awarded a High Distinction.

Year 8 – Ariel Nelson (top 1%)
Year 11 – Thomas Louth (top 1%)

Another 32 students were awarded a Distinction for being in the top 10% in their year group in Australia.

***ICAS - International competitions and Assessment for Schools*

MIDDLE SCHOOL

Incursions

World of Maths Hands on problem solving activities for all Middle School students.

Reward days/
Excursions

Adventure World, Bowling Club, Movies, Basketball Academy, Discos, River Cruises, Scitech, Perth Zoo, Special Lunches/Breakfasts, Year 9 Camp, BBQs, Sports Activities

SCIENCE

Competitions

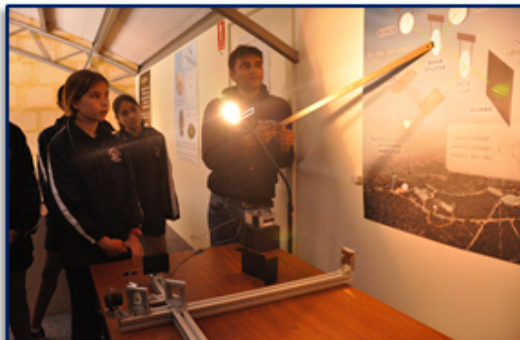
National Chemistry Quiz, Big Science Competition, ICAS Competition

Workshops

Robogal – students with special interest in STEM/Engineering.
Science Club after school

Excursions

Year 10 Engineering Excursion.
Year 11 Biology Excursion.
Year 11 Physics Excursion Adventure World.
Science trial Gingga Gravitation Wave workshops with research students.



VALUE ADDING: OPPORTUNITIES FOR STUDENTS

THE ARTS

Music Camp	2.5 day music camp - Year 7-10 music students
Excursion	Perth International Arts Festival Program excursion SVAPA students.
ANZAC Ceremony	Music students performance at Kings Park.
Arts Festival	Whole school event including community partnerships.
Early morning classes	Once a week for Years 7-9 SVAPA students.
Weekend Workshop	Once a term for SVAPA students.



STUDENT ENGAGEMENT and WELL-BEING

An important measure of engagement and well-being is student attendance. In 2017, once again, the school achieved all attendance targets. Improving student attendance has been an important goal as students being in class matters. Students with poor attendance are supported, where relevant, through the Attendance Panel process. The school has a well-accepted uniform code that enjoys good support from parents.

The school's behaviour code for students is likewise supported. The school's approach to dress and behaviour contribute to the positive learning behaviour. Bullying prevention strategies are applied to ensure the school environment is safe for students. Bullying is not tolerated. A key performance indicator is that the school scores a minimum of 3.5 in that student component of the National School Opinion Survey. In 2017, this was exceeded indicating students believe bullying is managed well within the school. The school promotes Community Service as a component of active citizenship. The Colours Program, which has a service component, is well supported as are a range of community based programs, such as Cadets WA.

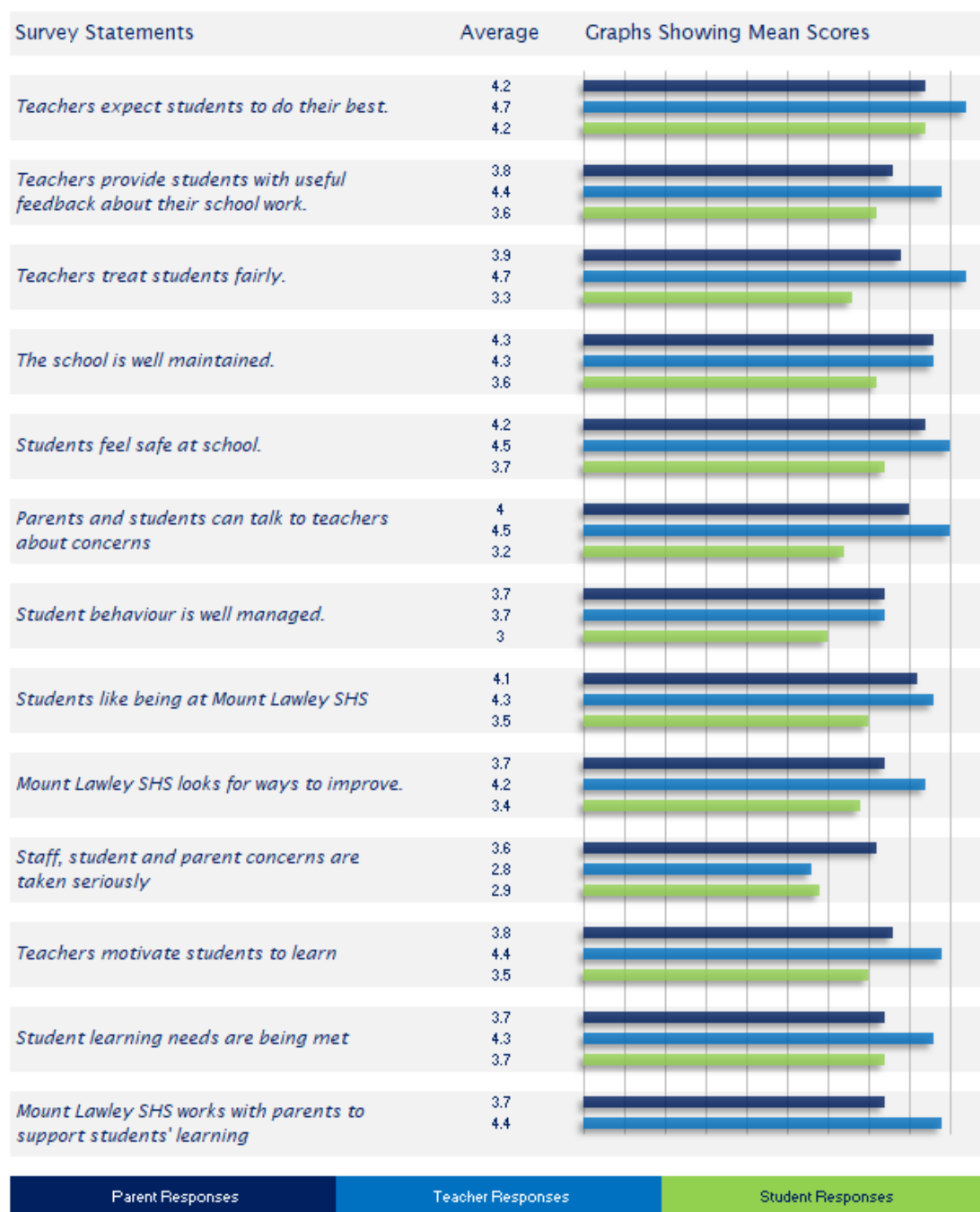
P&C/SCHOOL BOARD

The school community is well served by the P&C which is well led by the President, Mr John Pryor. The hard working committee provides great support to the President and to the school. The School Board, chaired by Dr Jenny Fay, also made a very valuable contribution. The assistance of the parent volunteers serving on these groups is gratefully acknowledged. The P&C parent support groups adds tremendous value to many of the school's programs, including but not limited to; the Specialist Languages program, the Specialist Visual and Performing Arts program and Music. The Community Art Auction raises significant funds for Music and SVAPA. It is one of the many successful events totally managed or supported by a parent committee.



NATIONAL SCHOOL OPINION SURVEYS: Parents, Students, teachers

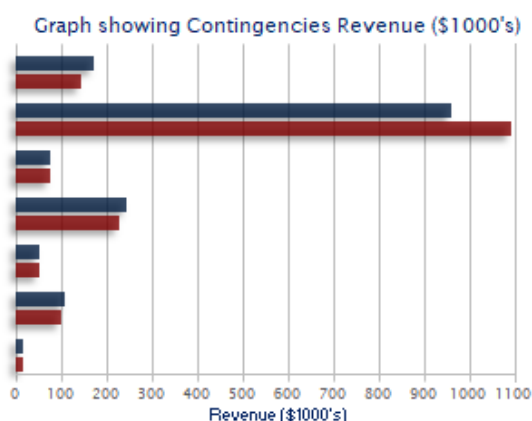
All Western Australian schools are required to administer parent, student and staff National School Opinion Surveys. Mount Lawley Senior High School conducts the Parent, Student and Staff surveys annually.



The National Schools Opinion Survey seeks feedback from parents, students and teachers. These surveys provide an important source of information which assists the school in self-reflective and improvement planning processes.

REVENUE: CASH (as at 31 December 2017)

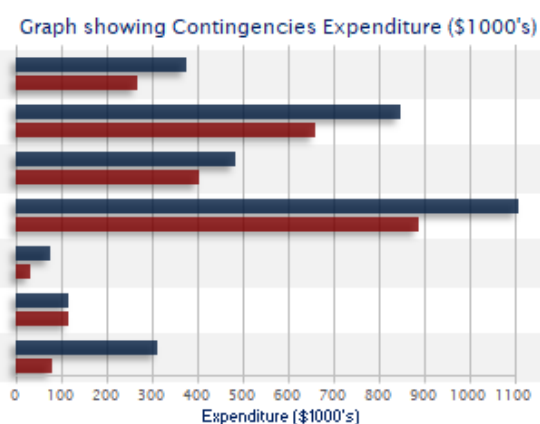
Sources of Revenue	Budget	Actual
1 Voluntary contributions	175,839.00	146,413.95
2 Charges and fees	960,591.00	1,094,938.43
3 Fees from Facilities Hire	78,683.00	78,864.80
4 Fundraising, Donations, Sponsorship	244,086.57	230,411.08
5 Other State/Local Govt Revenues	55,738.00	55,737.50
6 Other Revenues	111,913.00	101,375.75
7 Transfer from Reserve or DGR	18,615.80	18,615.80
Total - Locally Raised Funds	1,645,466.37	1,726,357.31
Opening Balance	836,673.00	836,673.72
Student centred Funding	901,270.00	964,577.55
Total Cash funds Available	3,383,409.37	3,527,608.58
Total Salary Allocation	16,184,677.00	16,184,677.00
Total Funds Available	19,568,086.37	19,712,285.58



Budget precision for projected income is, by nature, difficult to predict. Conservative budget projections are therefore customary. The higher than expected charges and fees collection rate, which exceeded the budget, was due to additional extra cost optional charges such as excursions. Voluntary contributions were just over 8% less than expected. Fundraising was down by a little more than 5% whilst "Other Revenues" were down by 9%. The budget projections were within 99.27% of the actual figures.

EXPENDITURE (as at 31 December 2017)

Areas of Expenditure	Budget	Actual
1 Administration	378,319.00	268,753.87
2 Utilities, facilities and Maintenance	850,471.00	663,236.43
3 Buildings, Property and Equipment	484,911.00	407,287.97
4 Curriculum and Student Services	1,110,299.64	888,154.86
5 Professional Development	77,396.73	35,647.44
6 Transfer to Reserve	116,193.00	116,193.00
7 Other Expenditure	312,865.00	82,193.82
Total Goods and Services Expenditure	3,330,455.37	2,461,467.39
Total Forecast Salary Expenditure	15,680,926.00	13,087,221.00
Total Expenditure	19,011,381.37	15,548,688.39
Cash Budget Variance	52,954.00	



Mount Lawley SHS has a notional operating budget of \$19million. There is good parent support for the school in terms of making payments for Contributions and Charges. For Charges, which are compulsory, 96.55% of parents made payments in Years 11/12 and 85.12% in lower school. For Voluntary Contributions, the 2017 collection rate was 70.71%. This represents a decline from 2016. All income generated by Contributions and Charges is allocated to classroom operations.

LEGEND

Budgeted figures
Actual Figures

THE HONOURS SOCIETY 2017



Anishka Brown



Zachary Dempsey



Jessica Emery



Tahlia Glasson



Suzanna Ho



Mohamed Imran



Annalise Kop



Jeremy Lee



Ryan Makin



Michael Nicholi



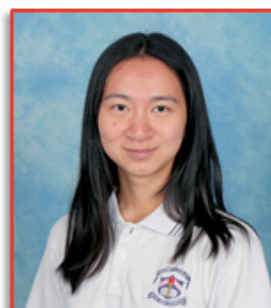
Liam Niedzielski



Annalisa Yang



Amaru Zachariassen



Anya Zhao

In 1982 the Honours Society was created to recognise outstanding scholastic achievement in years 11 and 12 at Mount Lawley Senior High School. The society recognises hard work, consistent application and a high standard of excellence. A student really "selects herself/himself through attitude and application to studies in Senior School. To be eligible for membership, a student must receive a minimum of 12 "A" grades. Today, with vocational pathways in place, the number of "A" grades can be discounted due to certificate studies. Additionally, achievement across extracurricular domains is considered. At the school assembly each new member is given a Mount Lawley SHS Honours Society badge and a Mount Lawley SHS Honours Society certificate.

ATAR CERTIFICATES OF DISTINCTION



Alysa Alea



Anishka Brown



Zachary Dempsey



Jessica Emery



Reese Horton



Phoebe Hu-Collins



Mohamed Imran



Annalise Kop



Jeremy Lee



Ryan Makin



Liam Niedzielski



Jia Zhu

MIDDLE SCHOOL DUX AWARD 2017
Presented by Mr Simon Millman,
MLA, Member for Mount Lawley



Ella Dickie Year 9

YEAR 10 SVAPA AWARD 2017
Presented by Ms Felicity Moldrich, Convenor Mount Lawley
Senior High School Specialist Visual and Performing Arts (SVAPA)
Parent Support Committee



Sophia Kelly Year 10

MIDDLE SCHOOL SVAPA AWARD 2017
Specialist Visual and Performing Arts



Sarah Brook Year 9

DES BEARD MIDDLE SCHOOL CITIZENSHIP AWARD
2017
Presented by Mr Arthur Leggett, OAM, ED



Emily Mazalevskis

CHRISTINE RICHARDSON
CITIZENSHIP AWARD 2017



Aaron Rossal-Rixon

RALPH HONNER, DSO, MC AWARD
FOR ENDEAVOUR 2017



Melissa Pocrnja

THE PETER SPARBIER PERPETUAL MATHEMATICS
SCHOLARSHIP 2017
Presented by Cr Rod Willox, AM, RFD, ED, JP City of Stirling



Hari Prasanna
Year 10

GENERAL STUDIES DUX 2017



Amaru Zachariassen
Year 12

THE PRINCIPAL'S GIFTED AND TALENTED
LANGUAGES AWARDS 2017



Lesley Street, Luca Conte, Harrison Huxham,
Lucy Dye, Zolboo Amarbileg

YEAR 10 ASSOCIATE PRINCIPAL'S AWARD 2017
Presented by Mr Simon Milman, MLA Member for Mount Lawley



Lucy Sutherland
Year 10

THE PRINCIPAL'S ART PRIZE - THE SAGITTE YOM-TOV
PRIZE 2017 Presented by Ms Dianne Cohen representing
Mr Zvi Yom-Tov and Dr Carmela Yom-Tov



Julie Nguyen
Year 12

AUSTRALIAN DEFENCE FORCE LONG TAN
LEADERSHIP AND TEAMWORK AWARD
2017 Presented by Leading Seaman Benjamin
Hale, HMAS Stirling, Royal Australian Navy



Jasmine Hensley Year 12
Inset: Olivia Trahair Year 12

ALMA PORTER AWARD 2017
Presented by Ms Anne Gilchrist,
Manager Corporate Services,
Mount Lawley Senior High School



Sheldon Horsfield
Year 10

Alma Porter was a School Officer at Mount Lawley from 1955 to 1988/9. She was Registrar and the only office lady at the school.

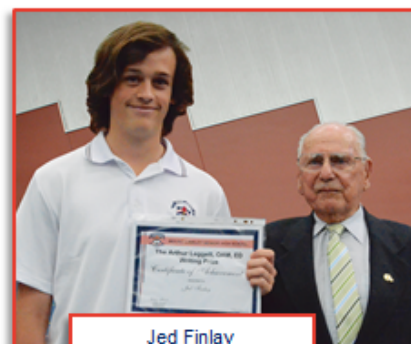
The award provides a text book to a Year 10 student who is deserving due to their efforts and achievement and would benefit from the prize.

THE ANITA CHONG (OAM) AND GEOFF DAVIS (AM) LANGUAGE AWARDS 2017
Presented by Mr Wayne Houlton, Convenor,
Languages Parent Support Committee and Mr Geoff Davis, AM



Joaquim De Sousa (Year 7), Felicity Mann (Year 9), Lucy Rennick (Year 8)

ARTHUR LEGGETT, OAM, ED, WRITING PRIZE
2017 Presented by Mr Arthur Leggett, OAM, ED
President, Ex-Prisoner of War Association, WA
Sponsored by the Lodge of Sincerity,
Mount Hawthorn



Jed Finlay
Year 10

EX-POW ASSOCIATION CADET OF THE YEAR 2017 Presented
by Captain Ray Galliot, RFD, RL
Ex-Prisoner of War Association, WA



Jade Rotherham
Year 10

THE JADE WEI AWARD FOR INTERNATIONAL STUDENTS 2017
Presented by Lesley Street, Principal and Michael Camilleri, Associate
Principal Mount Lawley Senior High School



Cloe Jeanjean
Year 10

MUSIC SCHOLARSHIP 2017 Presented by Mr Larry Manno,
Rotary Club of Mount Lawley and Mr Brian Copping Sponsored by
the Rotary Club of Mount Lawley



Leon Sam
Year 10

ROTARY STUDENT OF THE YEAR 2017
Presented by Mr Paul Gianatti Rotary Club of Mount Lawley
Donated by the Rotary Club of Mount Lawley



Oscar Kaspi-Crutchett
Year 11

WALTER HOREB LITERARY AWARD 2017

Presented by Mr Walter Horeb, former Head of Department,
English Mount Lawley Senior High School



Veronica Pinkerton (Poetry) Year 9,
Ella Monaghan (Prose) Year 9

Walter Horeb was Head of Department of English for many years through the 1970s to 1990s and was editor of the school year book. The award, presented since 2000, is to encourage students to become involved in creative writing.

ANDREW DAVIS MEMORIAL AWARDS 2017

Presented by Mr David and Mrs Helen Davis and Mr Neil Davis



Amaru Zachariassen
Year 12 (Art)

Suzanna Ho
Year 12 (Music)

John Andrew Davis started high school at Mount Lawley in 1976. He quickly became prominent in his two passions - Music and Art.

In 1978, in a soccer training accident, his life was cut short at the age of 15 years and 2 months. This award presented since 1978, is to recognise students for their dedication to the areas of Music and Art.

THE TAMMY SOLENEC PRIZE FOR THE HIGHEST
ACHIEVING YEAR 12 INDIGENOUS STUDENT 2017

Presented by Jaymee Uren on behalf of Tammy Solene



Brittney Andrews
Year 12



The 90's Club

- Back row:** Anishka Brown, Benjamin Baronowitz, Analissa Yang.
- Third row:** Michael Duong, Julian Heng, Mohamed Imran, Emily Pietrocola, Stephanie Hood, Rachael Tipping, Tahlia Glasson.
- Second row:** Natasha Shelley, Teagan Shelley, Allysa Alea, Abbey Prentice, Liam Niedzielski, Aaron Parton, Jeremy Lee, Rachael Fiorentino, Jessica Emery.
- Front row:** Rhianna Howells, Ethan Chia, Ruth Staer, Finn Grieco Hazewinkel, Max Gar-Hou Tran, Josephine Offer, Liam McKenzie, Reese Horton, Zachary Dempsey, Jesse Kilcullen.

